

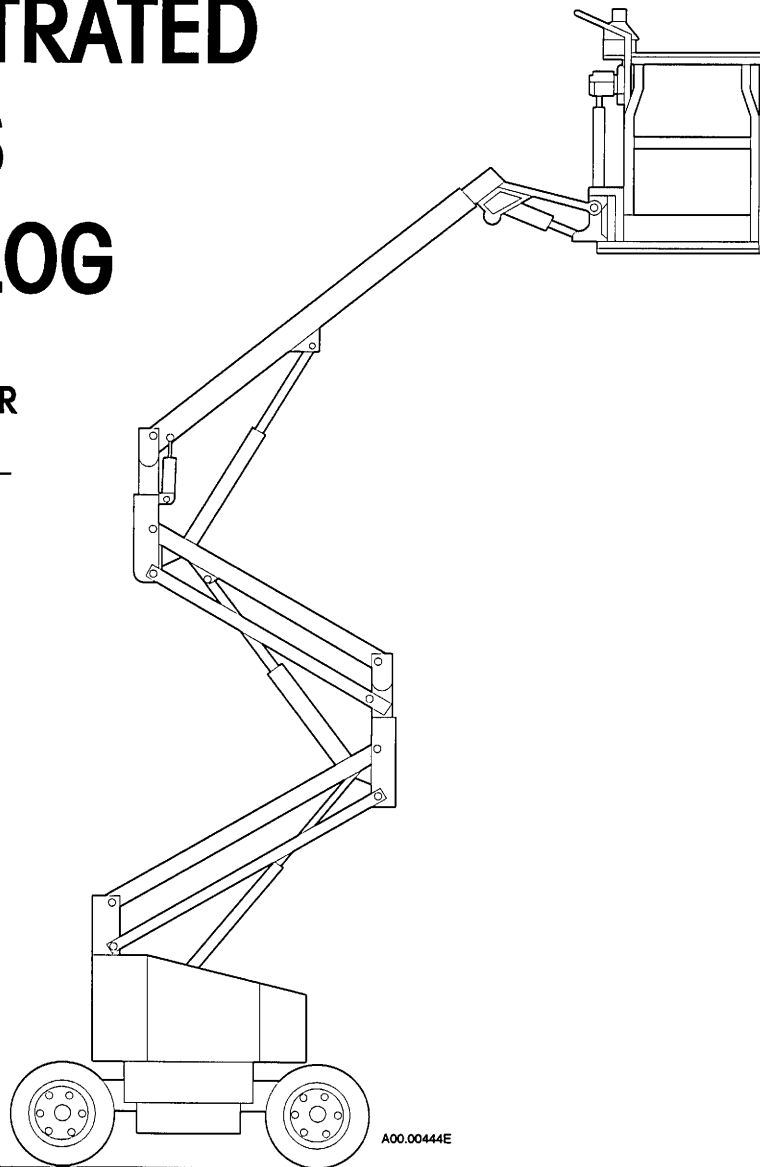
**SILVER EAGLE  
41/24 ELECTRIC**

S/N W 3715 and up

**ILLUSTRATED  
PARTS  
CATALOG**

FOR MACHINE  
SERIAL NUMBER

---



Part No. 89-412715 • Revision A.6 dated Oct. 1995 •

# TABLE OF CONTENTS

## INTRODUCTION

## PRIMARY MACHINE COMPONENT GROUPS

### SECTION 1: UNDERCARRIAGE

1.10: UNDERCARRIAGE

### SECTION 2: SUPERSTRUCTURE

2.13: SUPERSTRUCTURE - HYDRAULIC COMPARTMENT

2.14: SUPERSTRUCTURE - ELECTRICAL COMPARTMENT

### SECTION 3: BOOM

3.7: UPPER BOOM ASSEMBLY

3.8: LOWER BOOM ASSEMBLY

3.9: MIDDLE BOOM ASSEMBLY

### SECTION 4: PLATFORM

4.8: PLATFORM ASSEMBLY

### SECTION 6: VALVE BANK

6.8: GROUND/ PLATFORM VALVE BANK ASSEMBLY

### SECTION 7: GROUND CONTROL BOX

7.15: GROUND CONTROL BOX

### SECTION 9: PLATFORM CONTROL CONSOLE

9.13 PLATFORM CONTROL CONSOLE

### SECTION 11: CYLINDERS

11.06 MASTER CYLINDER

11.07 SLAVE CYLINDER

11.19 LIFT CYLINDER

### SECTION 12: PUMPS

12.10 EMERGENCY HAND PUMP ASSEMBLY

12.11 POWER UNIT

### SECTION 18: WHEEL BRAKE

18.06: REAR DRUM BRAKE ASSEMBLY

### SECTION 19: AXLE

19.1: AXLE AND BRAKE ASSEMBLY

## **TABLE OF CONTENTS CONTINUED**

### **SECTION 20: DRIVE SHAFT**

**20.3: DRIVE SHAFT**

### **SECTION 21: PLATFORM ROTATOR**

**21.1: PLATFORM ROTATOR (40:1 SPEED REDUCER)**

**21.3: HYDRAULIC ROTATOR**

**21.4: HYDRAULIC ACTUATOR ASSEMBLY**

### **SECTION 23: MANIFOLD**

**23.5: VALVE BLOCK**

### **SECTION 29: CONTROLLER**

**29.02: DRIVE CONTROLLER ASSEMBLY (JOYSTICK)**

**29.7: JOYSTICK - DRIVE CONTROLLER**

### **SECTION 99: DECALS**

**99.3: DECALS**

## INTRODUCTION

This Illustrated Parts Catalog is designed to help you identify and order the correct replacement parts for use on SIMON MODEL 41/24 ELECTRIC POWERED SILVER-EAGLE SELF-PROPELLED AERIAL WORK PLATFORMS. All parts represented here are manufactured and supplied in accordance with Simon Aerials quality standards. We recommend that you use GENUINE SIMON AERIALS PARTS to insure maximum SAFETY and PERFORMANCE.

Prices for all parts listed in this Catalog can be found in a separate Spare Parts Price List. Please contact Simon Aerials Parts Department for the latest edition of the Spare Parts Price List.

## HOW TO USE THIS CATALOG

The Cover Page indicates the specific model or models covered by this Parts Catalog.

The "Table of Contents" pages list the specific sections, pages and page titles that are relevant to this model, and contained in this Catalog. Only those pages that refer specifically to the MODEL 41/24 ELECTRIC POWERED SILVER-EAGLE are included in this Catalog.

The "Primary Machine Component Groups" page illustrates the four major assemblies, along with their "Section" number.

The Parts Catalog is divided into "Sections", numbered from 1 through 99. Each section contains the individual parts that make up a major component, assembly or item. The first four sections (1 through 4) contain the major assemblies, or "Primary Machine Component Groups". Sections that follow contain sub-assemblies or components of these "major" assemblies.

If a part number is followed by a plate number in the "SEC." column, refer to the plate indicated for a further breakdown of components for that part number.

When selecting parts for a specific machine, be sure to verify the machine model number, and serial number or date code (found on the data plate). When ordering parts, always give:

1. Model and Serial Number
2. Item Part Number and Description
3. Order Quantity

If a part number is not listed for a selected item, please provide this additional information:

4. Parts Plate number, Item Number and Description of the desired item, OR
5. Part Number of the next assembly (Parent Part), if the desired item is not listed.

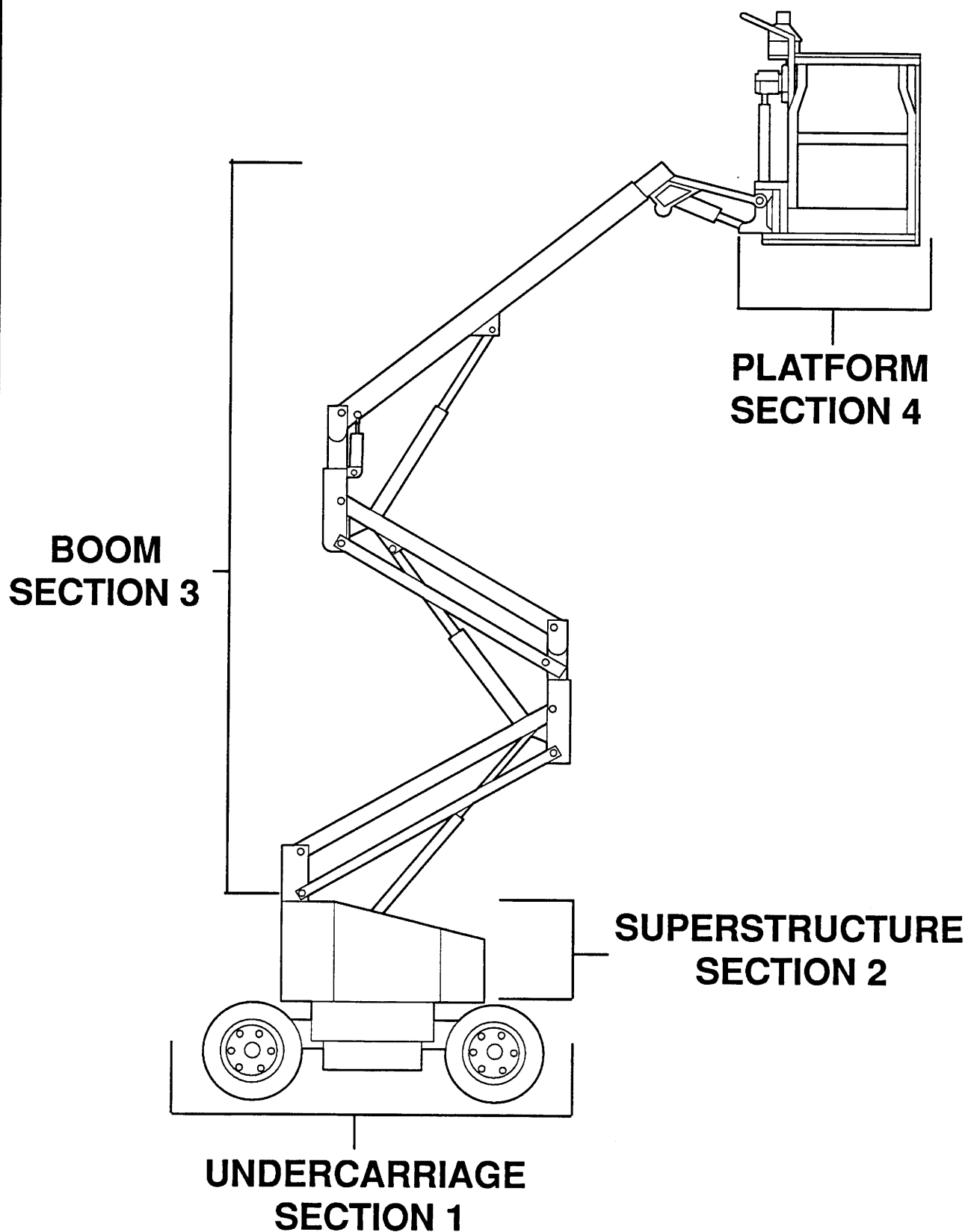
Some assembled items, such as hydraulic cylinders, may have been supplied by more than one source. While the assemblies may be able to be used interchangeably, FOR SAFETY'S SAKE, do not mix components or repair kits. Please confirm the make of the assembly on the unit before ordering or installing replacement parts.

Left and right-hand, front and rear should be determined as though you are standing at the Platform Control Console, with the Platform in stowed position (over the non-steering axle). All dimensions are in inches unless otherwise specified.

SIMON AERIALS INC. reserves the right to change, improve, modify or expand features of its equipment. Therefore, specifications, models or equipment are subject to change without notice, and without incurring obligations.

All SIMON AERIALS INC. manuals are periodically updated to reflect changes that occur in the equipment. Please contact Simon Aerials Technical Support Department for information regarding changes which may affect your machine, or for the latest edition of this catalog.

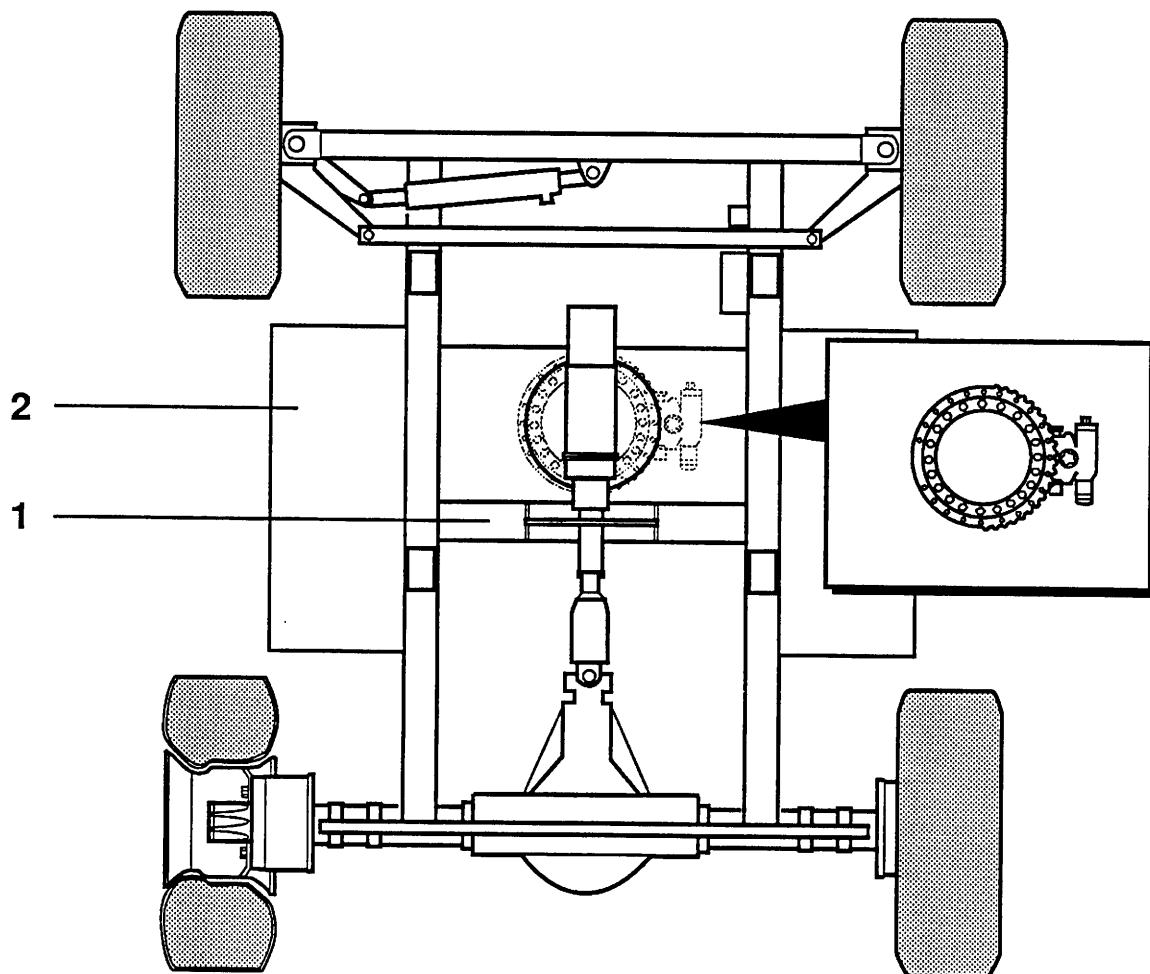




REV. 10/9/89

# PARTS LIST

ITEM	PART NUMBER	SEC.	DESCRIPTION	QTY.
1			CHASSIS	1
2	2119620		TRAY, BATTERY	2
3	2113580		COVER, BOX, BATTERY (NOT SHOWN)	2
4	10-033100		LATCH (NOT SHOWN)	4
5	03-053700		BATTERY, 6 VDC (NOT SHOWN)	8
DESCRIPTION			UNDERCARRIAGE (SHEET 1 OF 3)	PART NO.



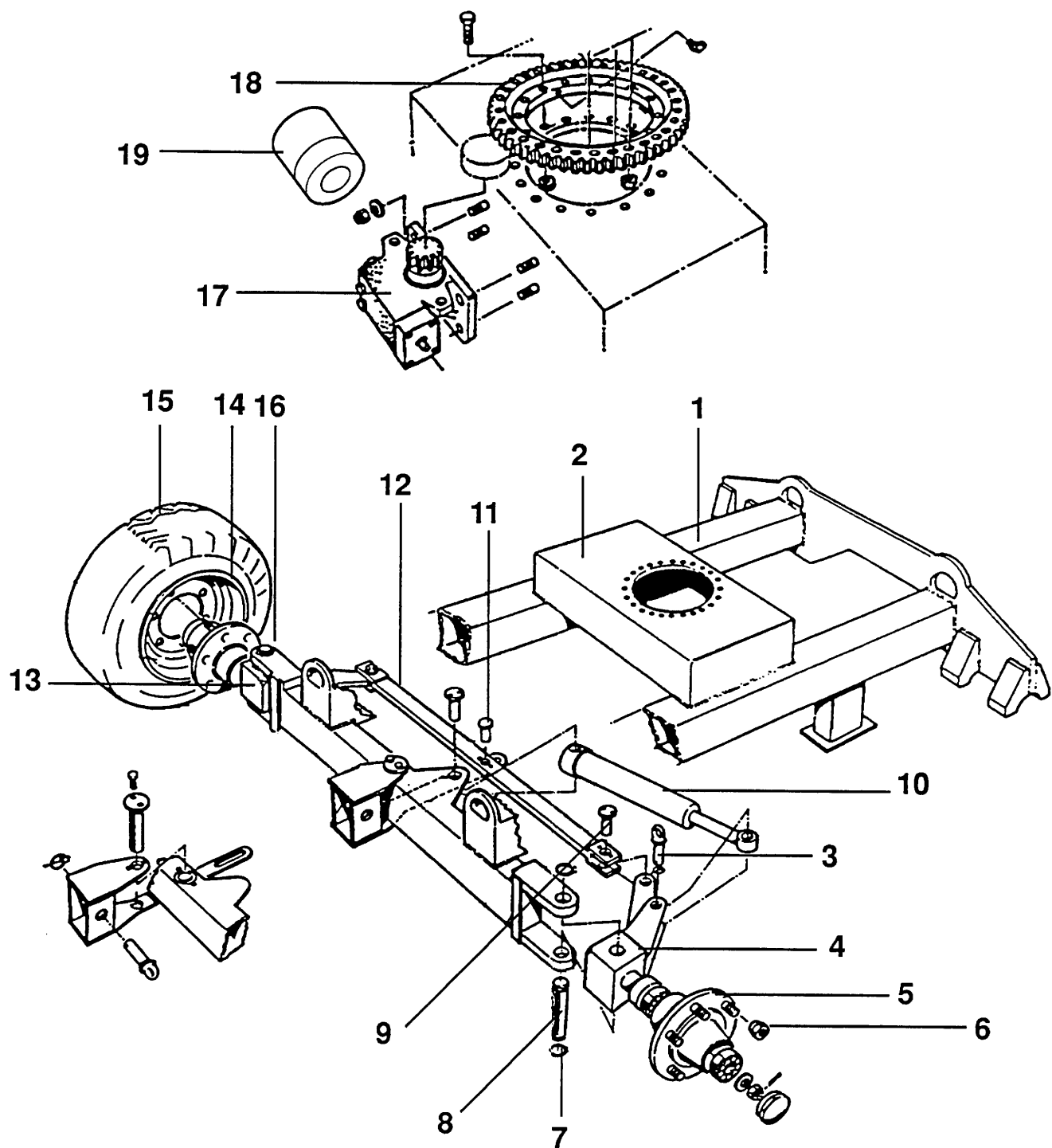
DESCRIPTION

UNDERCARRIAGE (SHEET 1 OF 3)

PART NO.

# PARTS LIST

ITEM	PART NUMBER	SEC.	DESCRIPTION	QTY.
1			CHASSIS	1
2			MOUNTING, BEARING, SWING	1
3	10-098900		PIN, ROD END, CYLINDER, STEER	1
4	02-024400		SPINDLE, L. H., ASSY	1
5	10-099000		ADAPTER, WHEEL	2
6	10-099001		NUT, WHEEL	12
7	08-064700		RING, RETAINING	4
8	10-099100		PIN, SPINDLE	2
9	10-099200		PIN, TIE ROD	1
10	04-026800		CYLINDER, STEER	1
11	10-099300		PIN, BLOCK END, CYLINDER, STEER	1
12	10-095700		TIE ROD	1
13	02-024300		SPINDLE, R. H.	1
14	2136980		RIM, STEER	2
15	02-023200		TIRE	4
16	08-064800		WASHER, THRUST	1
17	02-016700		GEAR BOX, SWING	1
18	08-058700		BEARING, SWING	1
19	01-067400		MOTOR, SWING	1
DESCRIPTION			UNDERCARRIAGE (SHEET 2 OF 3)	PART NO.



DESCRIPTION

UNDERCARRIAGE (SHEET 2 OF 3)

PART NO.

# PARTS LIST

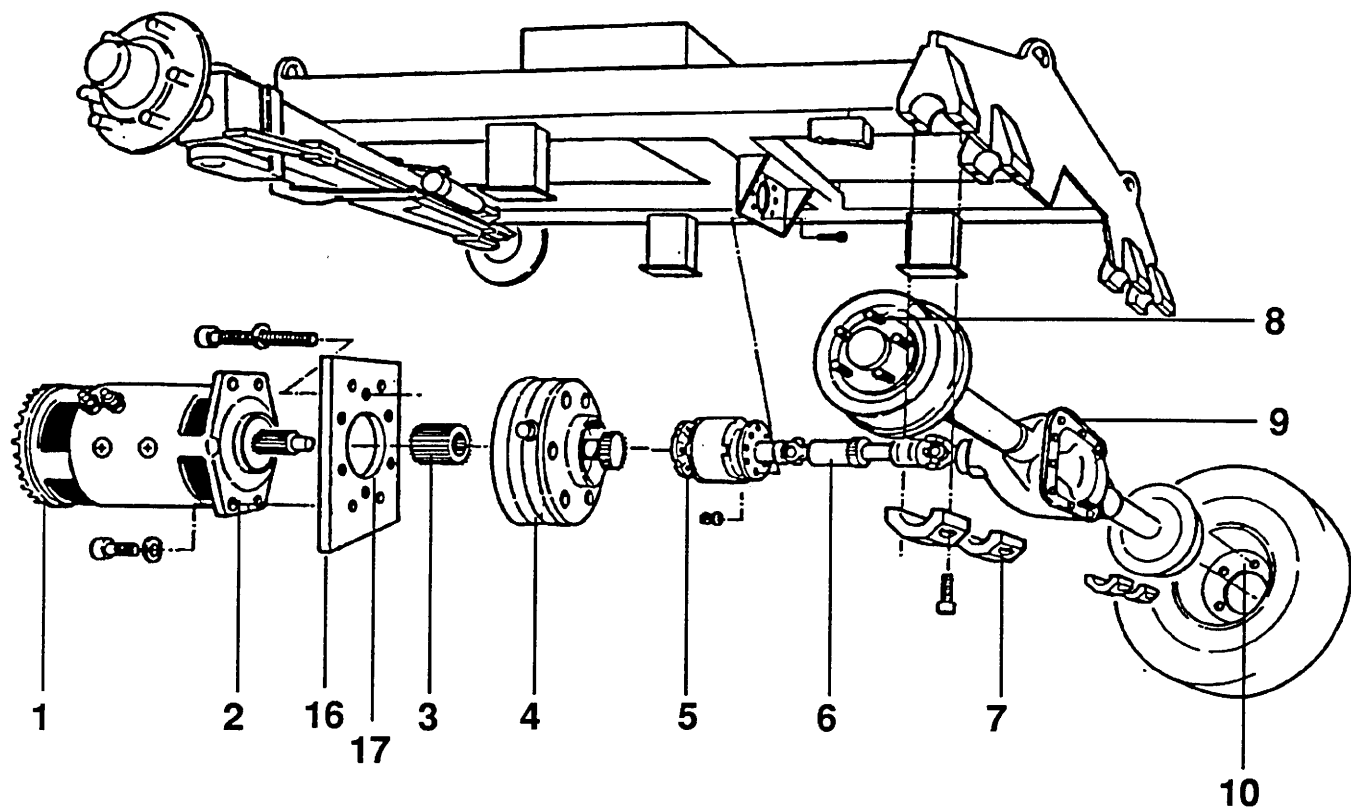
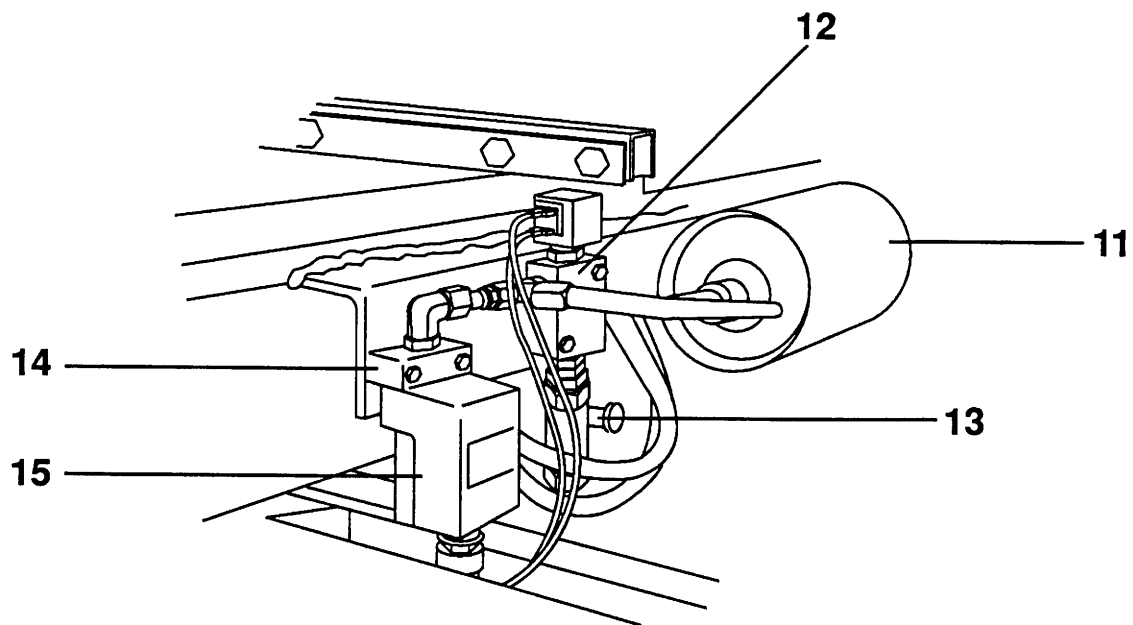
ITEM	PART NUMBER	SEC.	DESCRIPTION	QTY.
1	03-408000		MOTOR, ELECTRIC	1
2			PLATE, MOUNTING, MOTOR	1
3	02-024900		ADAPTER, DRIVE	1
4	02-024200		BRAKE	1
5	02-026100		REDUCER, SPEED	1
6	02-024500		SHAFT, DRIVE	1
7	02-024900		CLAMP, AXLE, BOTTOM	8
8			NUT, WHEEL, AXLE, DRIVE	10
9	02-022200		AXLE, DRIVE	1
10	2136970		RIM, DRIVE	2
11	01-080900		ACCUMULATOR	1
12	01-087000		VALVE, 3-WAY	1
13	01-018900		VALVE, FLOW CONTROL	1
14	01-081400		SUBPLATE	1
15	01-081300		SWITCH, PRESSURE	1
16	2159020		PLATE, ADAPTER (MOTOR TO BRAKE)	1
17	01-097000		SEAL, OIL (METRIC)	1

**DESCRIPTION**

UNDERCARRIAGE (SHEET 3 OF 3)

REV. 10/9/89

**PART NO.**



DESCRIPTION

UNDERCARRIAGE (SHEET 3 OF 3)

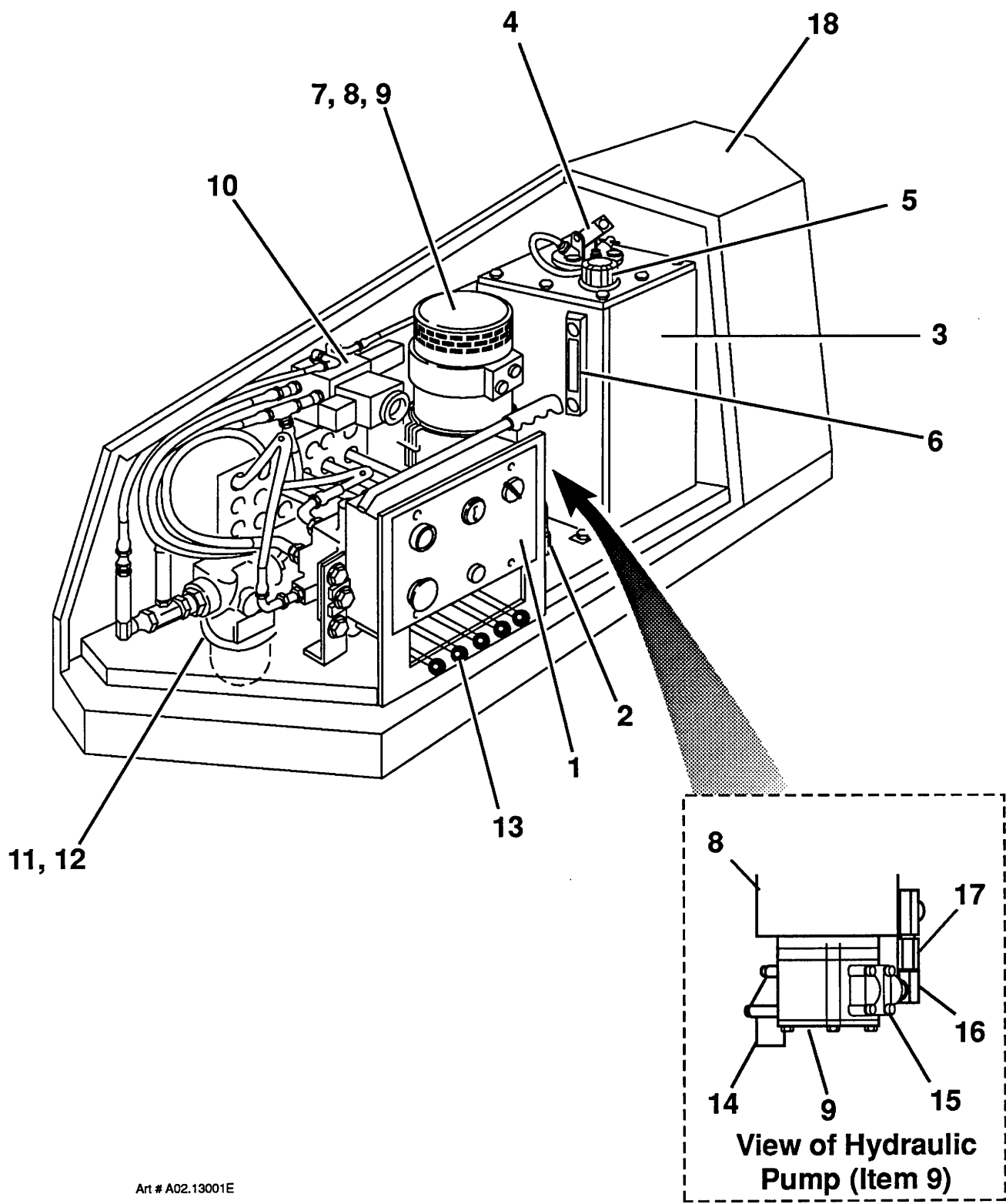
REV. 10/9/89

PART NO.

[illegible]

PLATE NO.	02.13	SIMON AERIALS INC.	REV. 27 AUG., 1993	PART NO.
-----------	-------	--------------------	--------------------	----------





Art # A02.13001E

TITLE SUPERSTRUCTURE (HYDRAULIC SIDE), SILVER EAGLE 41/24 ELECTRIC

**SIMON AERIALS INC.**

REV. 27 AUG., 1993

PART  
NO.

PLATE  
NO.

02.13

## PARTS LIST

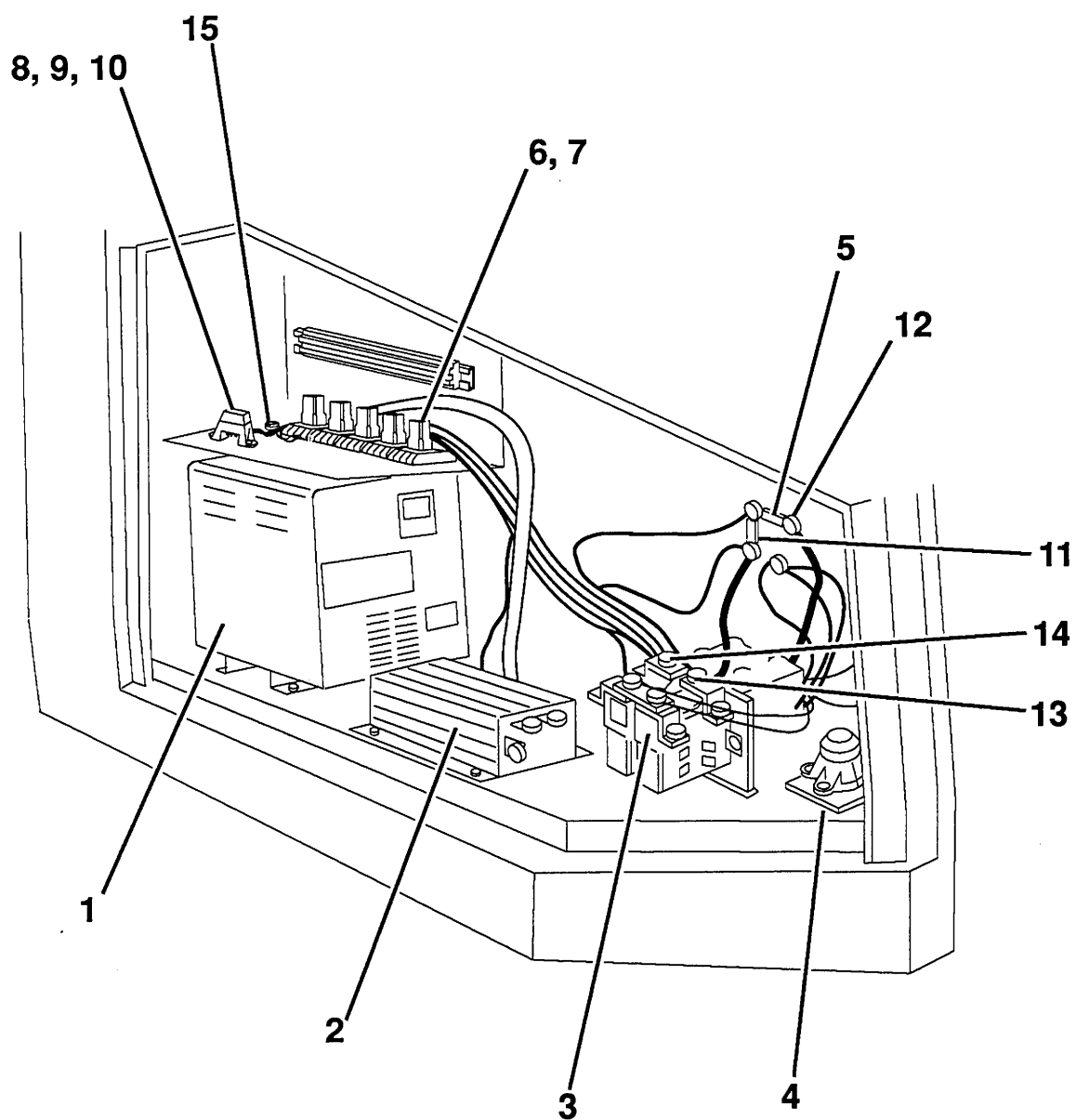
ITEM	PART NO	SEE SECTION	DESCRIPTION	QTY.
1	03-408200	30.09	CHARGER, BATTERY (supercedes 03-053600)	1
2	03-455200		CONTROLLER, SCR (Motor speed controller)	1
3	03-454300		CONTACTOR, MOTOR (Forward/ Reverse) (SW 182B-150)	1
4	03-023900		ALARM, TILT	1
5	03-454600		FUSE (125 Amp)	1
6	03-410400		RELAY (48 Volt DC, Double pole, double throw)	6
7	03-037500		SOCKET, RELAY	6
8	03-458800		HOLDER, FUSE	1
9	03-452700		FUSE (5 Amp)	2
10	03-452800		FUSE (10 Amp)	2
11	03-406900		FUSE (325 Amp)	1
12	03-458900		STAND OFF, FUSE	A.R.
13	03-459000		CONTACTOR, MOTOR (Lift) (SW 180B-8)	1
14	03-459100		CONTACTOR, MOTOR (Drive) (SW 180B-205)	1
15	03-451700		POTENTIOMETER (20 K Ohm)	1
			The following items are not shown:	
16	03-454500		HORN	1
17	10-002900		COVER, BALLAST (Electrical side)	1
18	10-106600		DOOR, ELECTRICAL COMPARTMENT	1
19	10-095600		HINGE, DOOR	2
20	10-095500		LATCH, DOOR	1
21	10-106000		SPRING, GAS (Gas cylinder, door opening)	1

TITLE SUPERSTRUCTURE (ELECTRICAL SIDE), SILVER EAGLE 41/24 ELECTRIC

PLATE NO.	02.14	SIMON AERIALS INC.
-----------	-------	--------------------

REV. 27 AUG., 1993

PART  
NO.



TITLE SUPERSTRUCTURE (ELECTRICAL SIDE), SILVER EAGLE 41/24 ELECTRIC

**SIMON AERIALS INC.**

REV. 27 AUG., 1993

PART  
NO.

PLATE  
NO.

02.14

## PARTS LIST

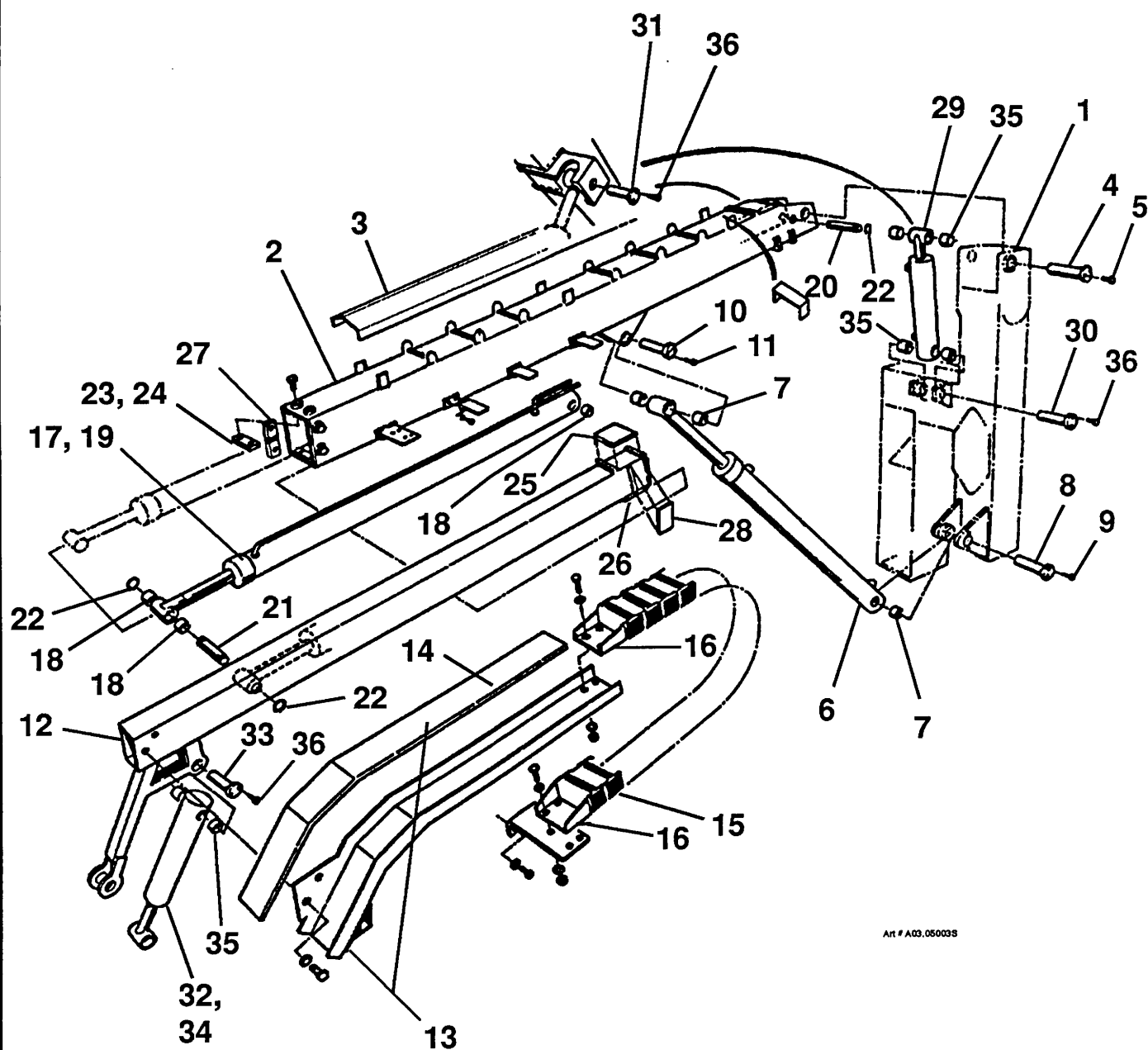
ITEM	PART NO	SEE SECTION	DESCRIPTION	QTY.
1			UPPER POST WELDMENT	1
2			BOOM WELDMENT, UPPER BASE	1
3	2158540		COVER, HOSE	1
4	10-100100		PIN, HEADED (Upper boom pivot)	1
5			SCREW	2
6	04-026900		CYLINDER, LIFT	1
7	08-059100		BUSHING, LIFT CYLINDER (case end)	2
8	10-099900		PIN, HEADED (Upper boom lift cylinder, case end)	1
9			SCREW	2
10	10-099900		PIN, HEADED (Upper boom lift cylinder, rod end)	1
11			SCREW	2
12			BOOM WELDMENT, UPPER TIP	1
13	10-092900		ANCHOR, MOVING (includes cover)	1
14	10-092901		COVER, MOVING ANCHOR	1
15	08-063500		CARRIER, HOSE	1
16	08-063502		FOOT, HOSE CARRIER (set of two)	2
17	04-027200		CYLINDER, TELESCOPE	1
18	08-064900		BUSHING	4
19	04-027201		CARTRIDGE, TELESCOPE CYLINDER HOLDING VALVE	1
20	10-083900		PIN, TELESCOPE CYLINDER (Case end)	1
21	10-081700		PIN, TELESCOPE CYLINDER (Rod end)	1
22			RING, RETAINING	4
23	10-100300		PAD, UPPER WEAR (upper end of base boom)	2
24	10-100700		PAD, LOWER WEAR (upper end of base boom)	2
25	10-100400		PAD, UPPER WEAR (lower end of tip boom)	2
26	10-100600		PAD, LOWER WEAR (lower end of tip boom)	2
27	10-100200		PAD, SIDE WEAR (upper end of base boom)	2
28	10-100500		PAD, SIDE WEAR (lower end of tip boom)	2
29	04-027000		CYLINDER, MASTER LEVELING	1
30	10-100000		PIN, HEADED (Master leveling cylinder, case end)	1
31	10-082200		PIN, HEADED (Master leveling cylinder, rod end)	1
32	04-027100		CYLINDER, SLAVE LEVELING	1
33	10-100000		PIN, HEADED (Slave leveling cylinder, case end)	1
34	10-082500		PIN, HEADED (Slave leveling cylinder, rod end)	1
35	08-044700		BUSHING	8
36			SCREW	8

**TITLE** UPPER BOOM ASSEMBLY, SILVER EAGLE

PLATE NO.	03.07	SIMON AERIALS INC.
-----------	-------	--------------------

REV. 11/08/91

PART  
NO.



Art # A03.050035

TITLE

UPPER BOOM ASSEMBLY, SILVER EAGLE

**SIMON AERIALS INC.**

REV. 11/08/91

PART  
NO.

PLATE  
NO.

03.07

## PARTS LIST

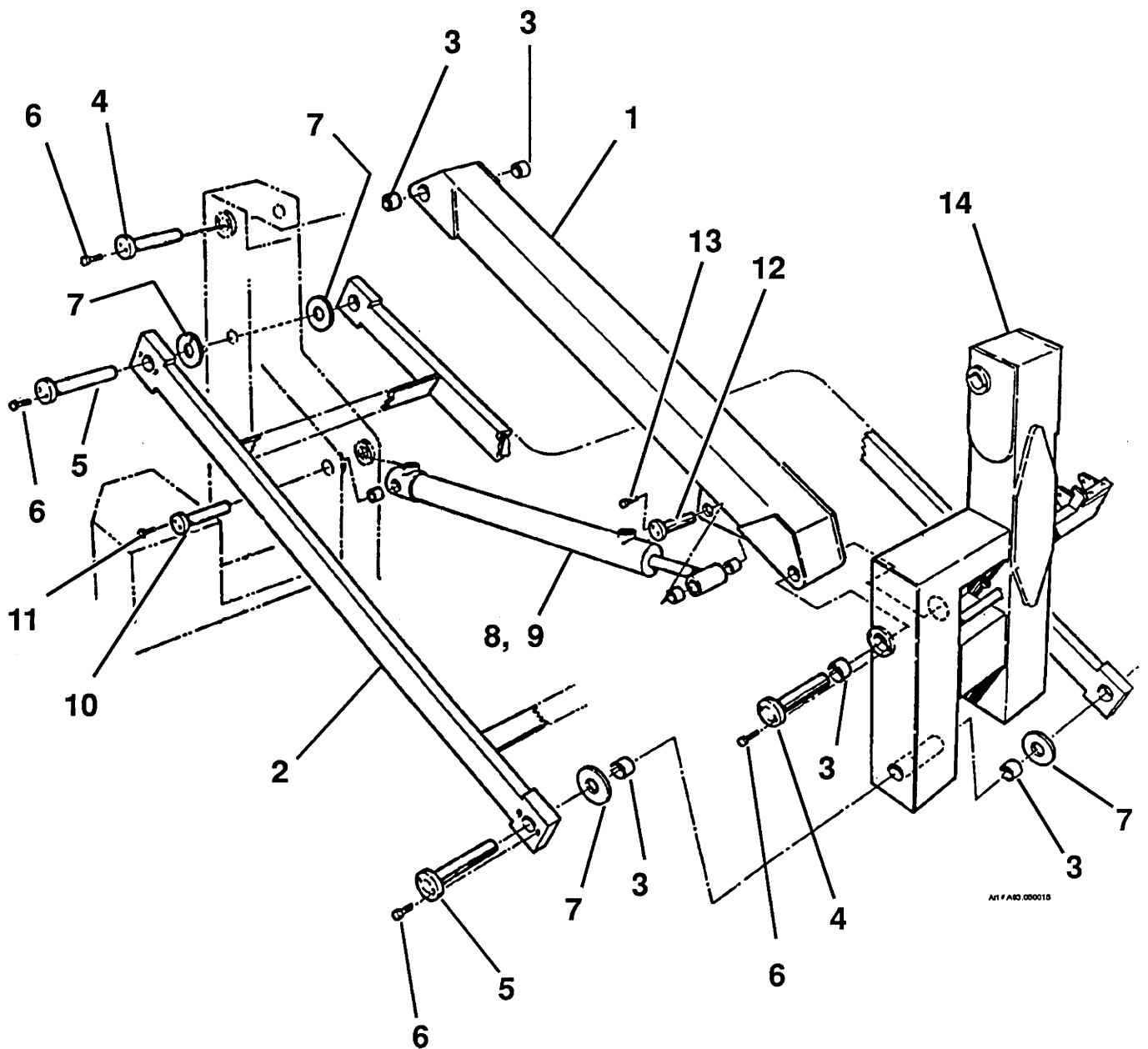
[illegible]

TITLE LOWER BOOM ASSEMBLY, (SILVER EAGLE)

PLATE NO.	03.08	SIMON AERIALS INC.
-----------	-------	--------------------

REV. 11/08/91

PART  
NO.



TITLE

LOWER BOOM ASSEMBLY, (SILVER EAGLE)

**SIMON AERIALS INC.**

REV. 11/08/91

PART  
NO.

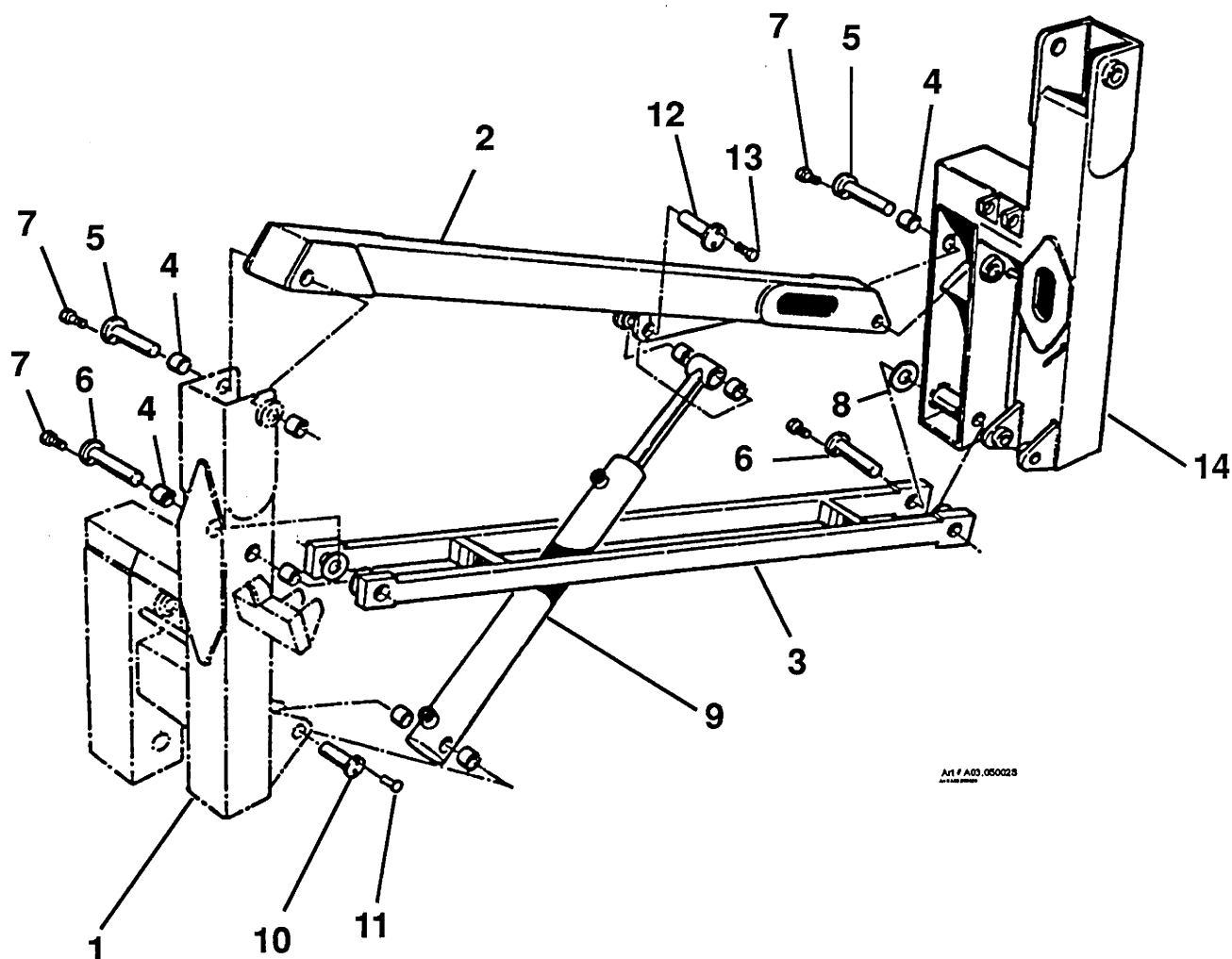
PLATE  
NO.

03.08



[illegible]





Art # A03.050028  
A10 100 00000

TITLE MIDDLE BOOM ASSEMBLY, 41/24 SILVER EAGLE

SIMON AERIALS INC.

REV. 11/08/91

PART  
NO.

PLATE  
NO. 03.09

## PARTS LIST

ITEM	PART NO	SEE SECTION	DESCRIPTION	QTY.
1	2098130		PLATFORM WELDMENT	
	2173060		30" x 60" (.76 M x 1.5 M), with manual rotator	1
	2150540		30" x 48" (.76 M x 1.2 M), with hydraulic rotator	1
2	3514160		30" x 60" (.76 M x 1.5 M), with hydraulic rotator	1
3	2041724		BAR ASSEMBLY, LATCH	1
4	2076577		PIVOT, DOOR	1
5	2041649		BAR, LATCH	1
6	07-003047		SPACER, LATCH BAR PIVOT	1
7	07-050016		CAP SCREW, HEX HEAD (3/8"-16 x 1-1/2", Grade 5)	1
8	08-010100		NUT, HEX LOCK (3/8"-16, Grade 5)	1
9	2108380		SPRING AND TUBE ASSEMBLY	1
10	07-003043		SPACER	1
11	07-003096		CAP SCREW, HEX HEAD (3/8"-16 x 3/4", Grade 5)	1
12	07-050018		CAP SCREW, HEX HEAD (1/2"-13 x 3-3/4", Grade 5)	1
13	03-021300		NUT, LOCK (1/2"-13, Grade 5)	1
14	03-021301		SWITCH ASSEMBLY, FOOT (Double pole)	1
15	03-021302		SWITCH (Double pole, double throw)	1
16	03-021303		COVER, SWITCH (Guard type, with latch)	1
17	2098060		DECAL, "DANGER"	1
18	10-064900		ARM, CRANK (Manual rotator)	1
19		9.13	KNOB, CRANK ARM	1
20		6.8	CONSOLE ASSEMBLY, PLATFORM CONTROL	1
21	2139060		VALVE BANK ASSEMBLY, PLATFORM	1
22			BAR, GRAB	1
	02-012400	21.01	ROTATOR, PLATFORM	
	2132120	21.03	with standard manual rotator (40:1 Speed reducer)	1
23	2102870		with optional hydraulic rotator (not shown)	1
24	08-014000		POST, PIVOT	1
25	08-014100		BEARING, SLEEVE	2
26	2101710		WASHER, THRUST	1
27	10-042400		LOCK, CAB PIVOT	1
28	10-067300		KNOB, PIVOT LOCK	1
29	10-082600		SPRING	1
30	08-059100		PIN, PLATFORM PIVOT	1
31			BUSHING	2
			RING, RETAINING	2

TITLE

PLATFORM ASSEMBLY

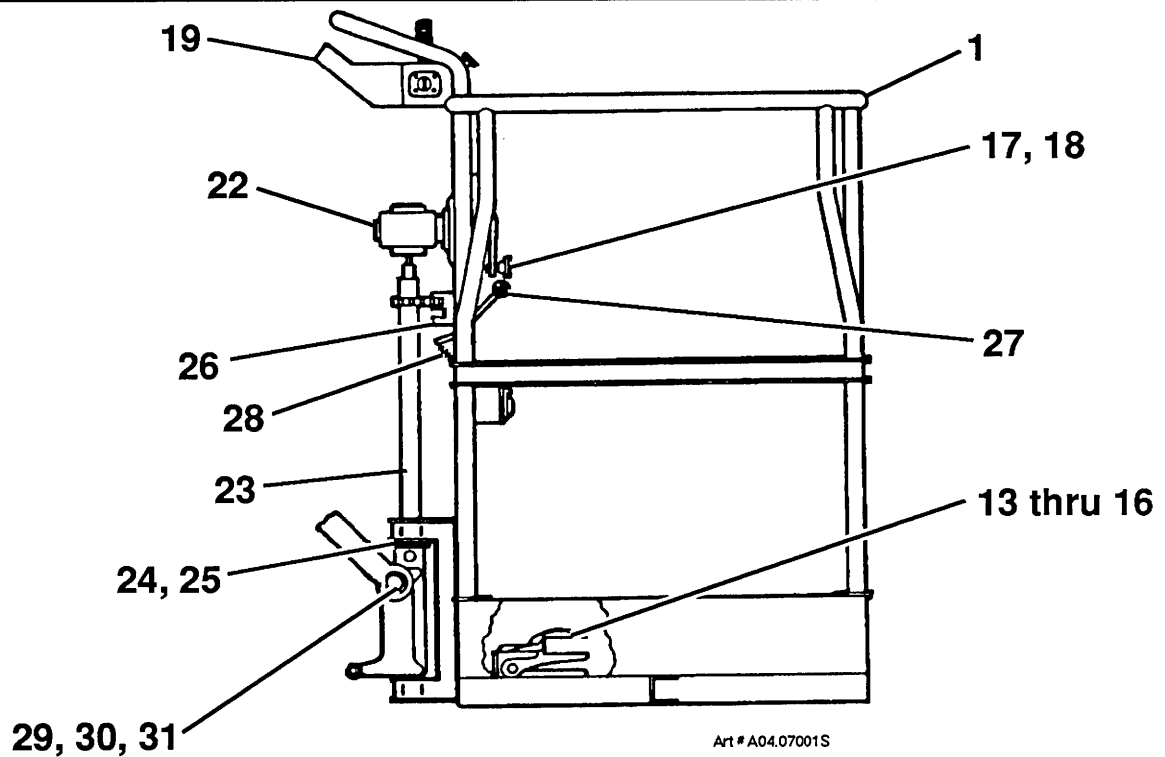
PLATE  
NO.

04.08

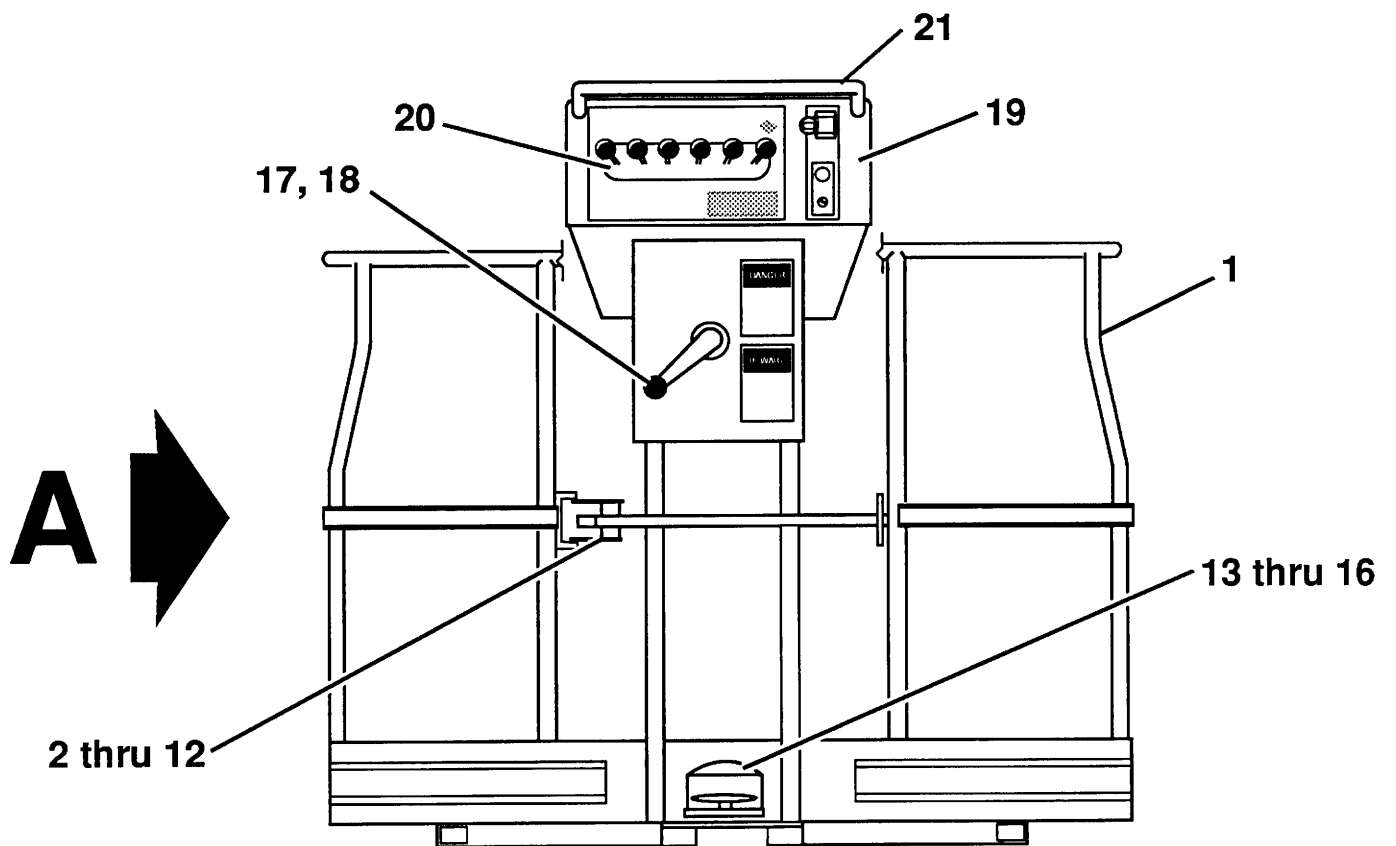
**SIMON AERIALS INC.**

REV. 02 SEP., 1993

PART  
NO.



View in direction of arrow "A"



TITLE

PLATFORM ASSEMBLY

**SIMON AERIALS INC.**

REV. 02 SEP., 1993

PART  
NO.

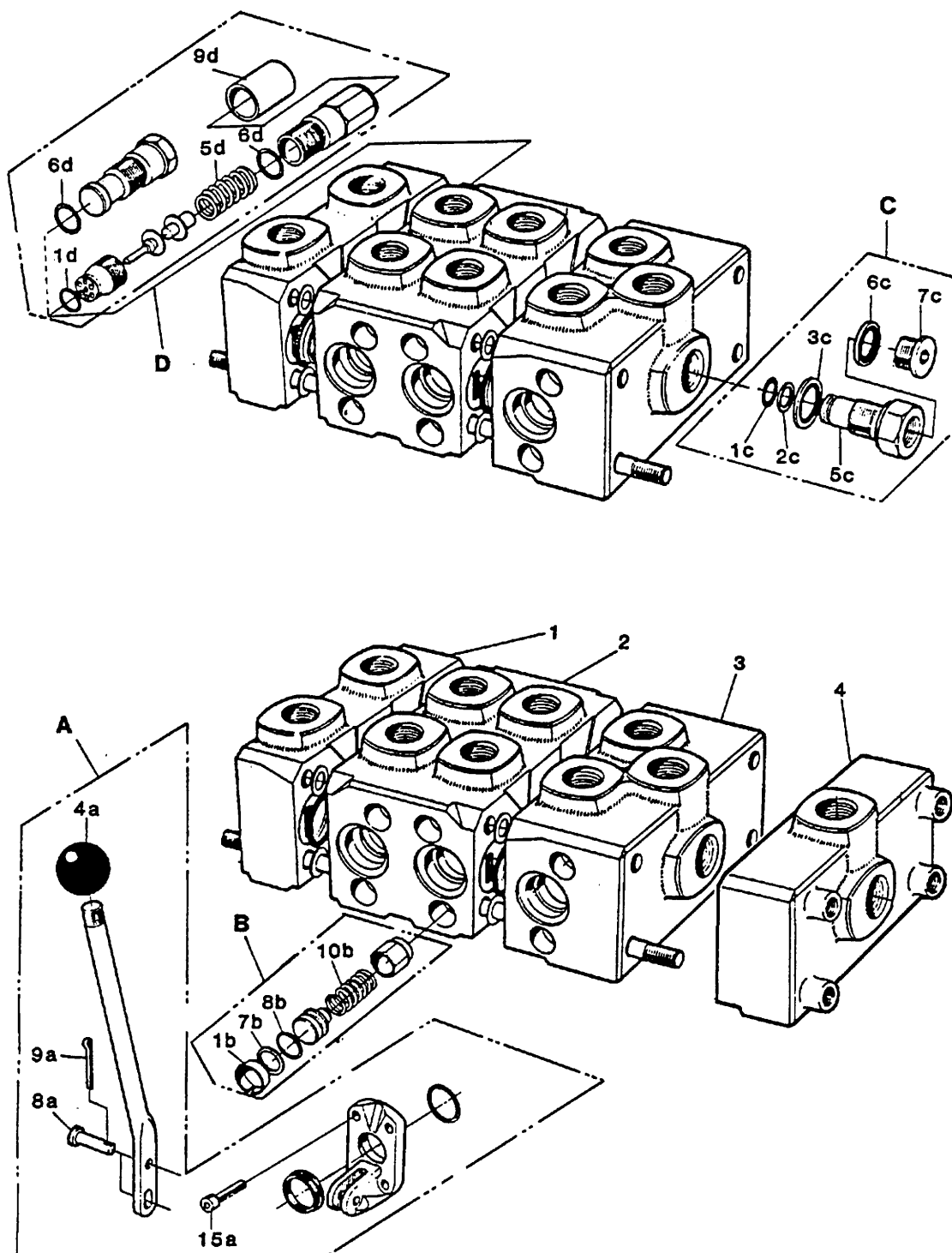
PLATE  
NO.

04.08

# PARTS LIST

ITEM	PART NUMBER	SEC.	DESCRIPTION	QTY.
1			VALVE SECTION, INLET	1
2			VALVE SECTION, TELESCOPE & SWING	1
2			VALVE SECTION, LOWER & UPPER BOOM	1
2			VALVE SECTION, LEVEL & UPPER BOOM	1
3			VALVE SECTION, OUTLET & UPPER BOOM	1
4			VALVE SECTION, OUTLET	1
A	01-072701		LEVER ASSEMBLY, HAND	
4A	01-072702		BALL, LEVER	1
8A			BOLT	1
9A			PIN, COTTER	1
15A			SCREW	2
B	01-072704		CHECK VALVE ASSEMBLY	
1B			CAP, PROTECTIVE	1
7B			RING, BACK-UP	1
8B			O-RING	1
10B			SPRING	1
C	01-072708		* VALVE, TANK PORT CONNECTOR	
C	01-072711		^ VALVE, PORT CONNECTOR BLOCKING	
*^1C			O-RING	1
*^2C			RING, BACK-UP	1
*^3C			SEAL	1
^6C			RING, SEAL	1
^7C			PLUG	1
D	01-072703		MAIN RELIEF VALVE ASSEMBLY	
1D			O-RING	1
5D			SPRING	1
6D			O-RING	2
9D			CAP, SEAL	1

DESCRIPTION	PART NO.
GROUND/PLATFORM VALVE BANK ASSY (SHEET 1 OF 2)	



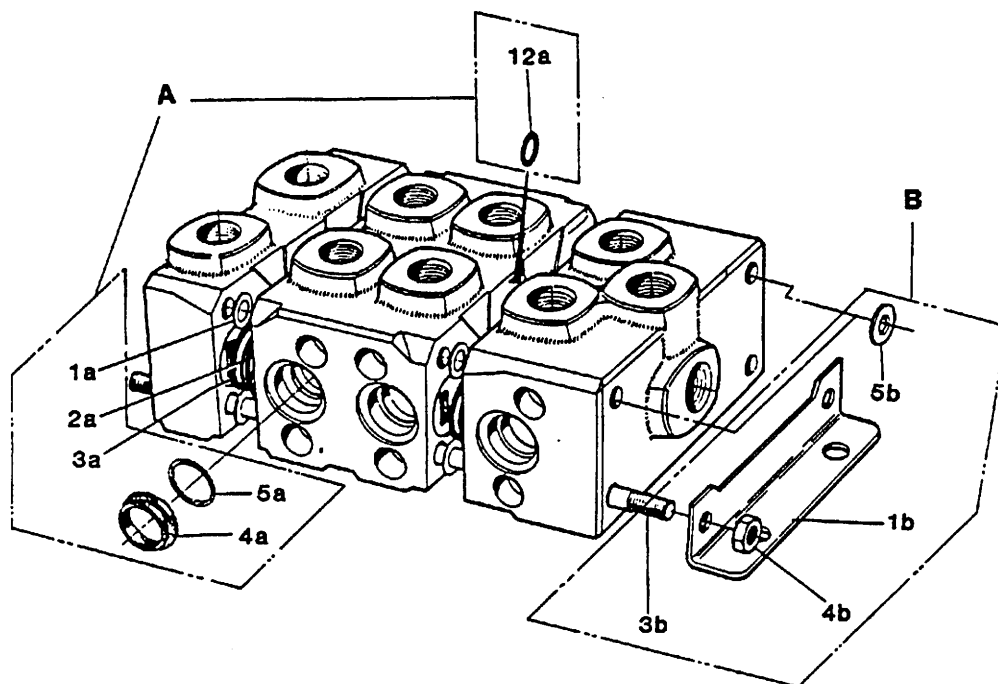
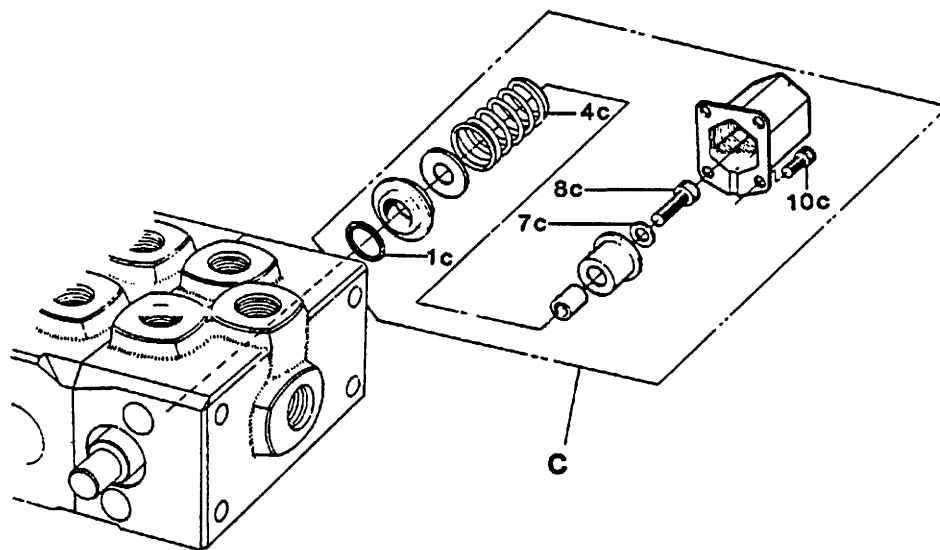
**DESCRIPTION**  
GROUND/PLATFORM VALVE BANK ASSY (SHEET 1 OF 2)

**PART NO.**

# PARTS LIST

ITEM	PART NUMBER	SEC.	DESCRIPTION	QTY.
A	01-072709		KIT, SEAL	1
1A			RING, SPACER	
2A			O-RING	
3A			RING, BACK-UP	
4A			SEAL	
5A			O-RING	
12A			O-RING	
B	01-072705		KIT, TIE ROD (4 SECTION VALVE BANK)	1
B	01-072706		KIT, TIE ROD (5 & 6 SECTION VALVE BANK)	1
1B			PLATE, MOUNTING	1
3B			TIE ROD	4
4B			NUT	8
5B			WASHER	8
C	01-072710		SPRING & CAP ASSEMBLY	1
1C			O-RING	1
4C			SPRING	1
7C			WASHER	1
8C			SCREW	1
10C			SCREW	21

DESCRIPTION	PART NO.
GROUND/PLATFORM VALVE BANK ASSY (SHEET 2 OF 2)	



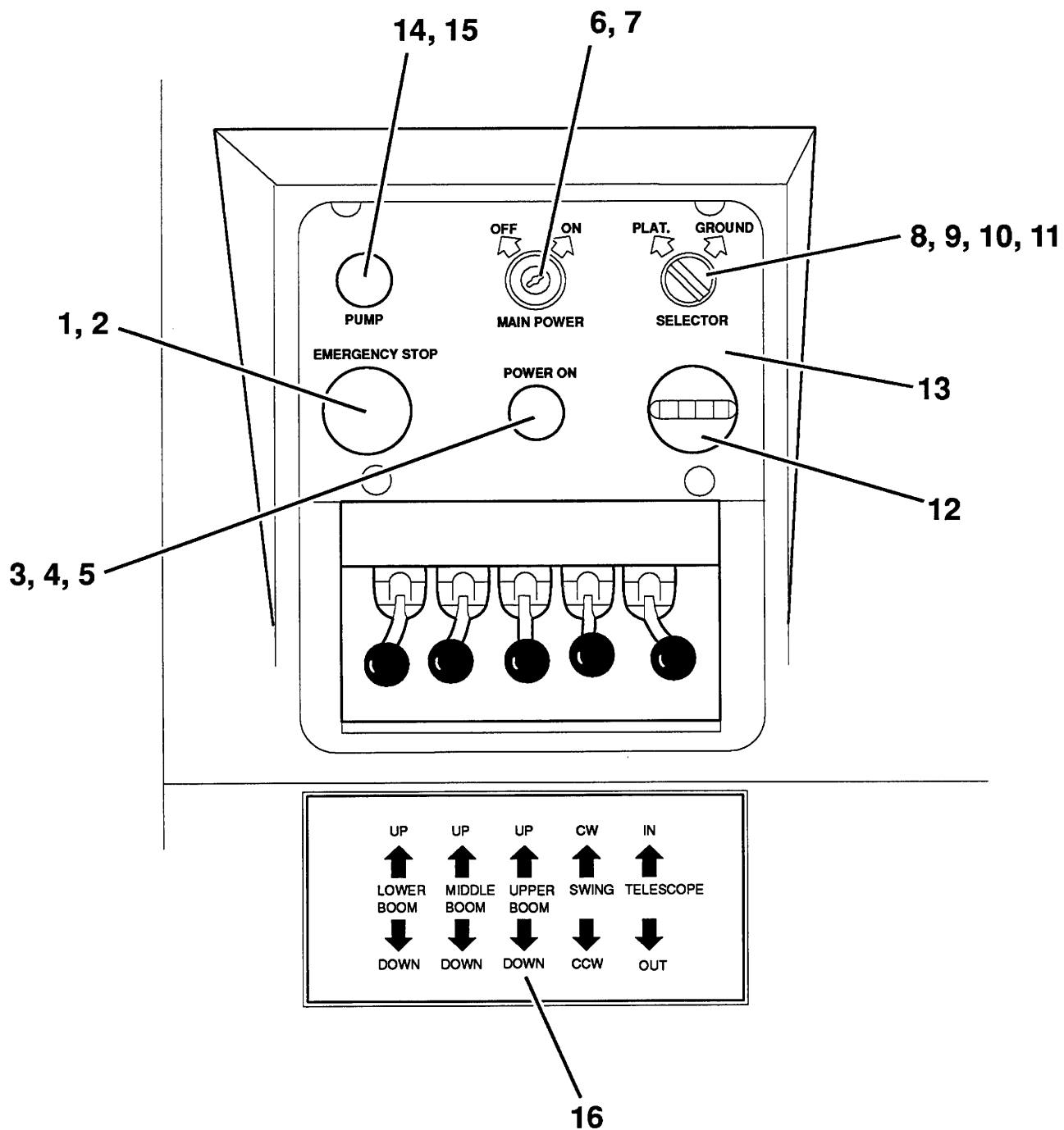
DESCRIPTION	PART NO.
GROUND/PLATFORM VALVE BANK ASSY (SHEET 2 OF 2)	

[illegible]

PLATE NO.	07.15	SIMON AERIALS INC.
-----------	-------	--------------------

PART  
NO.





TITLE GROUND CONTROL BOX, SILVER EAGLE 41/24 (ELECTRIC)

**SIMON AERIALS INC.**

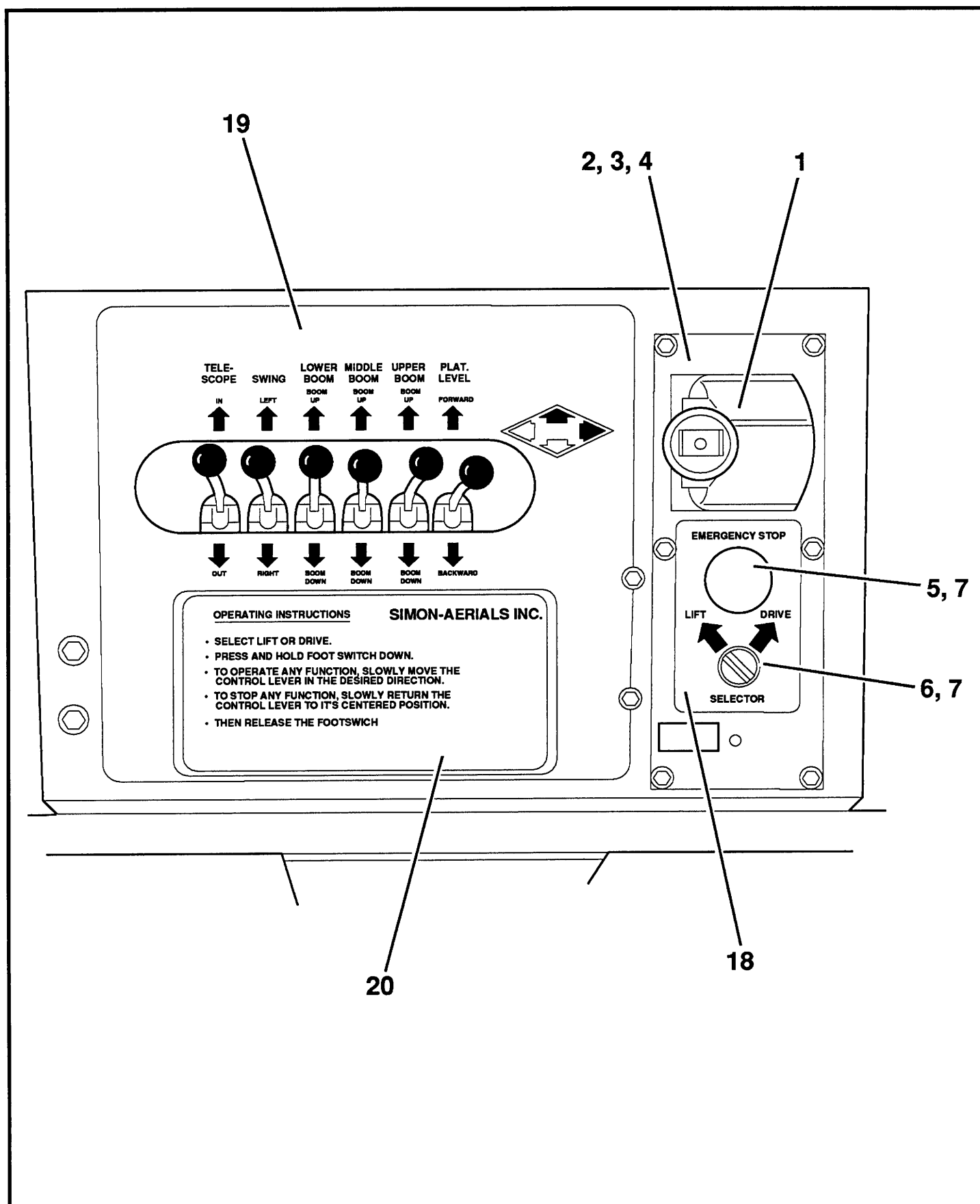
REV. 07 SEP., 1993

PART  
NO.

PLATE  
NO.

07.15

[illegible]PART  
NO.



TITLE PLATFORM CONTROL CONSOLE, SILVER EAGLE 41/24 (ELECTRIC)

**SIMON AERIALS INC.**

REV. 12 AUG., 1993

**PART  
NO.**

**PLATE  
NO.**

**09.13**

## PARTS LIST

ITEM	PART NO	SEE SECTION	DESCRIPTION	QTY.
1	04-028200		CYLINDER, MASTER (Type 1) <b>Note:</b> On a "Type 1" Cylinder, the port tube has a <b>bend at the end</b> , and <b>enters the cylinder side wall directly</b> .	1
	04-030400		The cylinder serial number, which is stamped on the cylinder side wall, has an <b>"A" prefix</b> . CYLINDER, MASTER (Type 2)	1
			<b>Note:</b> On a "Type 2" Cylinder, the port tube <b>has no bend</b> at the end, and enters a <b>cylindrical boss</b> welded to the cylinder side wall. The six-digit cylinder serial number stamped on the cylinder side wall has <b>no "A" prefix</b> .	
	04-032600		CYLINDER, MASTER (Type 3) <b>Note:</b> On a "Type 3" Cylinder, the port tube <b>has no bend</b> at the end, and enters a <b>round top boss</b> welded to the cylinder side wall. The serial number will be found on a nameplate attached to the holding valve.	1
			<b>Note:</b> When ordering a <b>REPLACEMENT CYLINDER</b> , "Type 3" will be supplied.	
2	04-028202		CARTRIDGE, HOLDING VALVE (for "Type 1" Cylinder)	2
	04-028202		(for "Type 2" Cylinder)	2
	04-028204		(for "Type 3" Cylinder)	2
3			SEAL KIT, HOLDING VALVE	1
4	04-032602		NUT, LOCK (for "Type 3" Cylinder)	1
5	04-032603		PISTON (for "Type 3" Cylinder)	1
6	04-032604		HEAD (for "Type 3" Cylinder)	1
7	04-032605		ROD (for "Type 3" Cylinder)	1
8	04-032606		BUSHING (for "Type 3" Cylinder)	4
9			SEAL KIT	
	04-028201		(for "Type 1" Cylinder)	1
	04-030401		(for "Type 2" Cylinder)	1
	04-032601		(for "Type 3" Cylinder)	1
			The following items are not included as part of the Master Cylinder Assembly:	
10	06-044400		ELBOW, STRAIGHT THREAD (4-6 C50X-S)	2
11	06-039300		CONNECTOR, STRAIGHT THREAD (4 F50X-S)	1
12	06-039500		ADAPTER (4-6 F50X-S)	1
13	08-050000		FITTING, GREASE (1/8", Straight)	1
14	08-051300		FITTING, GREASE (1/8" x 90°)	1
15	08-066300		CAP, GREASE (white plastic)	2

TITLE

MASTER CYLINDER

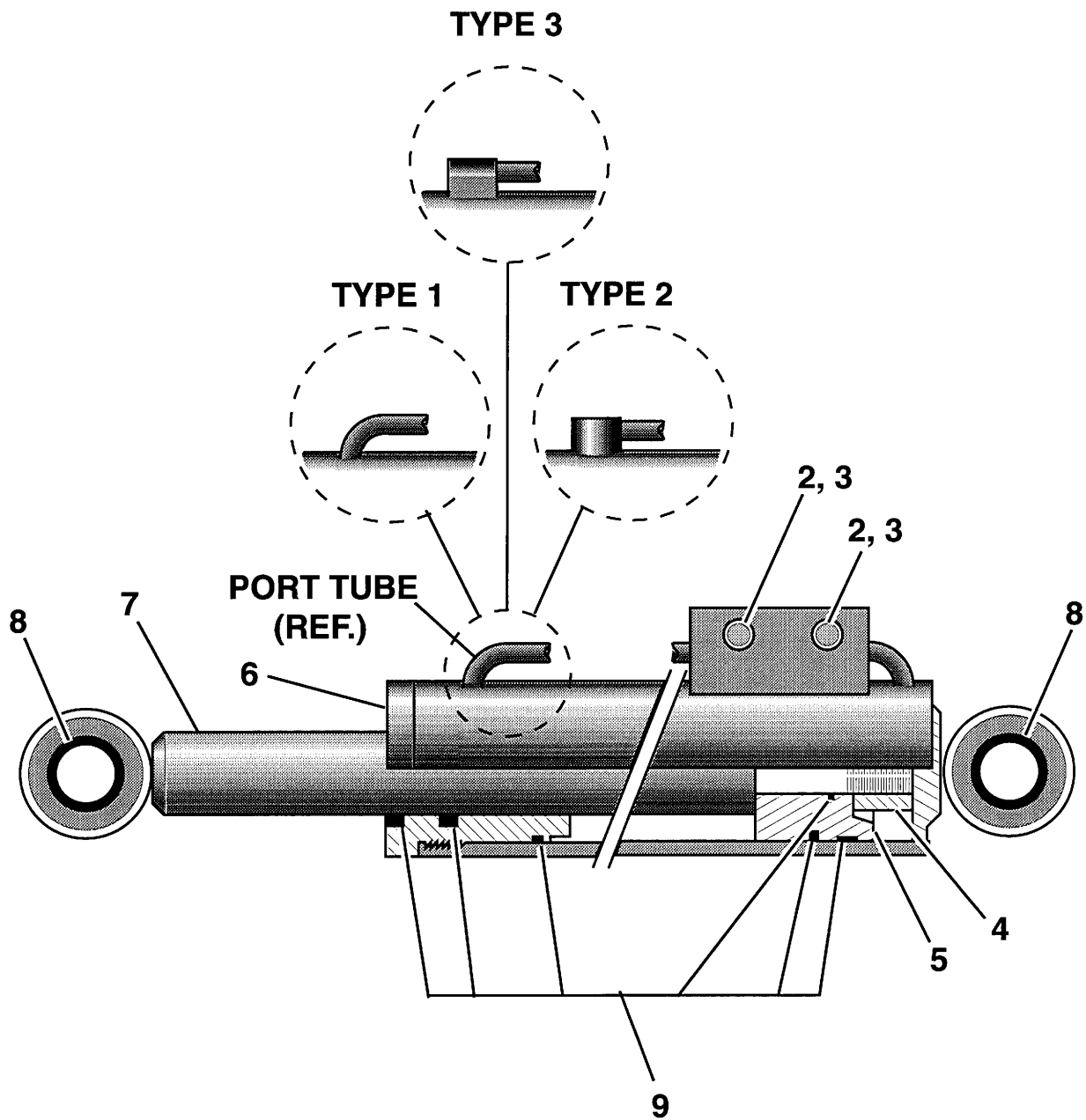
PLATE NO.

11.06

**SIMON AERIALS INC.**

REV. 24 MAR., 1995

PART NO.



TITLE

MASTER CYLINDER

**SIMON AERIALS INC.**

REV. 24 MAR., 1995

PART  
NO.

PLATE  
NO. 11.06

## PARTS LIST

ITEM	PART NO	SEE SECTION	DESCRIPTION	QTY.
1	04-028300		CYLINDER, SLAVE (Type 1) <b>Note:</b> On a "Type 1" Cylinder, the port tube has a <b>bend at the end</b> , and <b>enters the cylinder side wall directly</b> . The cylinder serial number, which is stamped on the cylinder side wall, has an <b>"A" prefix</b> .	1
	04-030500		CYLINDER, SLAVE (Type 2) <b>Note:</b> On a "Type 2" Cylinder, the port tube <b>has no bend</b> at the end, and enters a <b>cylindrical boss</b> welded to the cylinder side wall. The six-digit cylinder serial number stamped on the cylinder side wall has <b>no "A" prefix</b> .	1
	04-032700		CYLINDER, SLAVE (Type 3) <b>Note:</b> On a "Type 3" Cylinder, the port tube <b>has no bend</b> at the end, and enters a <b>round top boss</b> welded to the cylinder side wall. The cylinder can also be identified by the Part Number "04032700SH" on a nameplate located on the valve block, along with the serial number.	1
			<b>Note:</b> When ordering a <b>REPLACEMENT CYLINDER</b> , "Type 3" will be supplied.	
2			CARTRIDGE, HOLDING VALVE (Counterbalance Valve)	
	04-028302		for "Type 1" Cylinder	2
	04-030502		for "Type 2" Cylinder	2
			for "Type 3" Cylinder	2
	04-028302		Type 3a (Valve is stamped "CB-CG-LJN")	2
	01-227200		Type 3b [Valve is stamped "CB-CB-LHN", and set at 3,000 PSI (207 Bar) (211 Kg/ cm <sup>2</sup> )]	2
			<b>Note:</b> "Type 1" and "Type 2" holding valves are directly interchangeable, but <b>must be replaced in pairs</b> . When ordering a replacement holding valve, <b>(2) of "Type 3b"</b> will be supplied unless otherwise specified.	
3			SEAL KIT, COUNTERBALANCE VALVE	
	04-028303		(for Holding Valve for "Type 1" Cylinder)	1
	04-028303		(for "Type 3a" Holding Valve)	1
	01-227201		(for "Type 3b" Holding Valve)	1
4	04-032602		NUT, LOCK (for "Type 3" Cylinder)	1
5	04-032603		PISTON (for "Type 3" Cylinder)	1
6	04-032605		ROD (for "Type 3" Cylinder)	1
7	04-028301		BUSHING (for "Type 1" Cylinder)	4
	04-030504		BUSHING (for "Type 2" Cylinder)	4
	04-032606		BUSHING (for "Type 3" Cylinder)	4

TITLE

SLAVE CYLINDER (PLATE 1 OF 2)

PLATE NO.

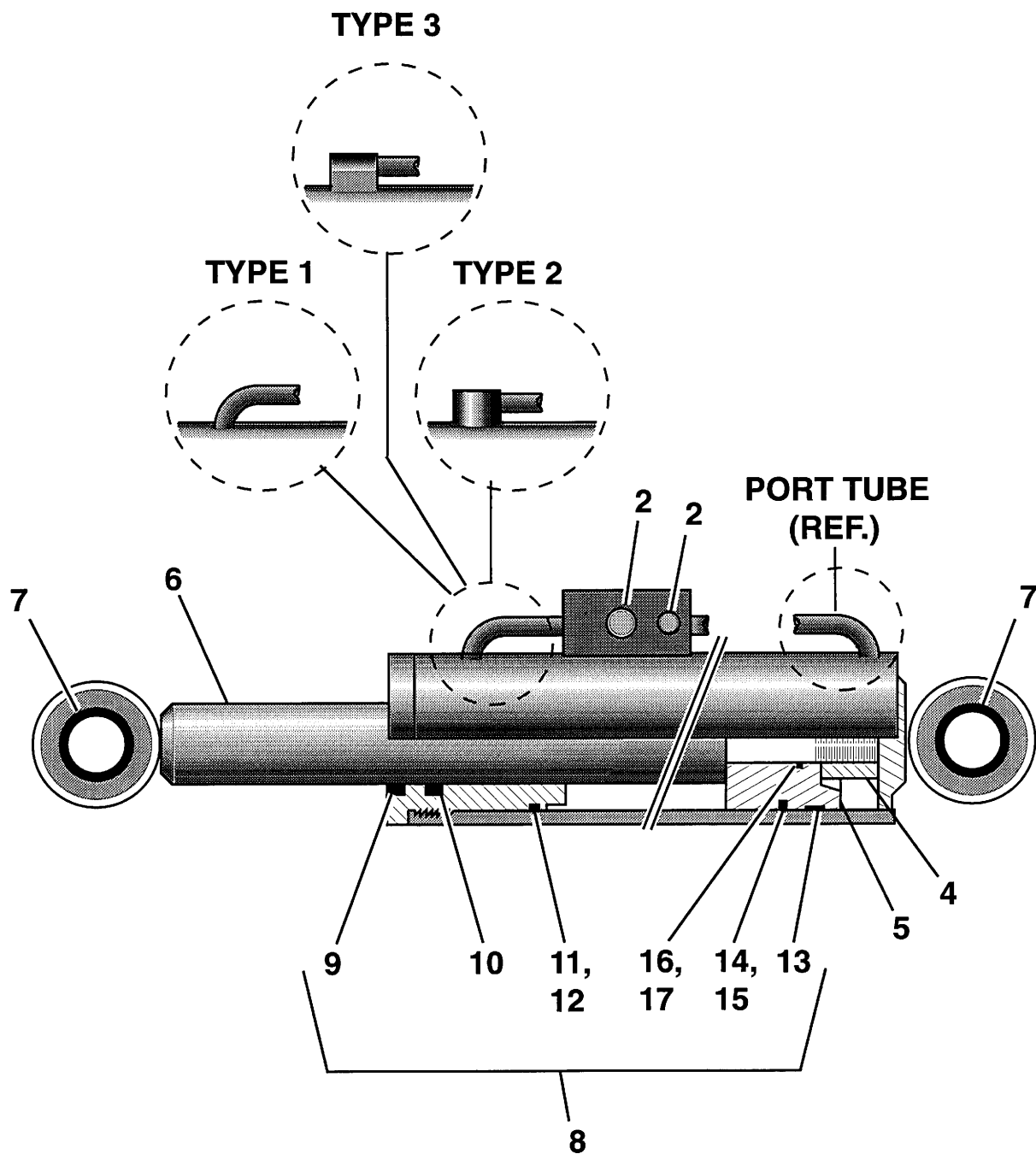
11.07

**SIMON AERIALS INC.**

REV. 15 OCT., 1993

PART NO.





TITLE

SLAVE CYLINDER (PLATE 1 OF 2)

**SIMON AERIALS INC.**

REV. 15 OCT., 1993

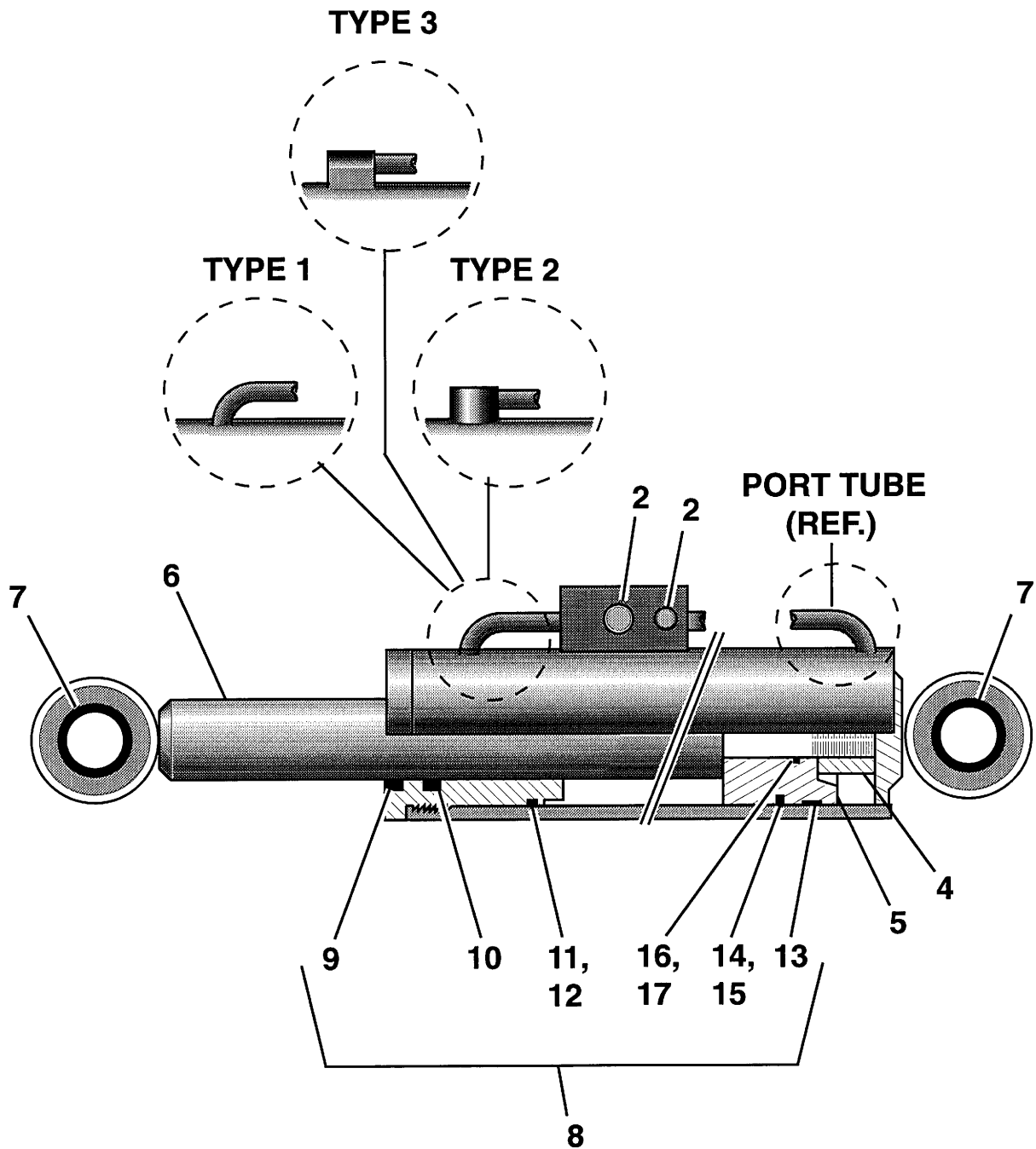
PART  
NO.

PLATE  
NO.

11.07

[illegible]





TITLE

SLAVE CYLINDER (PLATE 2 OF 2)

**SIMON AERIALS INC.**

REV. 15 OCT., 1993

PART  
NO.

PLATE  
NO.

11.07

## PARTS LIST

ITEM	PART NO	SEE SECTION	DESCRIPTION	QTY.
1	04-032400		CYLINDER, LIFT Lower and upper booms, type 1 (2.50" bore)	1
	04-037100		Lower and upper booms, type 2 (3.00" bore)	1
	04-032400		Mid boom, model 41/24 (2.50" bore)	1
			<b>Note:</b> When ordering a <b>Lower or Upper Boom</b> <b>REPLACEMENT CYLINDER</b> , "Type 2" will be supplied.	
2			VALVE, COUNTERBALANCE (Holding valve cartridge)	
	04-028302		(for cylinder 04-032400) (stamped "CBCG-LHN", and factory set at <b>3000</b> PSI [207 Bar] [211 Kg/ cm <sup>2</sup> ])	2
	04-039702		(for cylinder 04-037100) (stamped "CBCG-LJN", and factory set at <b>3900</b> PSI [269 Bar] [274 Kg/ cm <sup>2</sup> ])	1
3			NUT, LOCK	
	04-032402		(for cylinder 04-032400)	1
	04-033102		(for cylinder 04-037100)	1
4			PISTON	
	04-032403		(for cylinder 04-032400)	1
	04-033103		(for cylinder 04-037100)	1
5			GLAND, HEAD	
	04-032404		(for cylinder 04-032400)	1
	04-033104		(for cylinder 04-037100)	1
6			ROD, CYLINDER	
	04-032405		(for cylinder 04-032400)	1
	04-033105		(for cylinder 04-037100)	1
7			BUSHING	
	04-032406		(for cylinder 04-032400)	4
	04-033106		(for cylinder 04-037100)	4
8			SEAL KIT, CYLINDER	
	04-032401		(for cylinder 04-032400)	1
	04-033101		(for cylinder 04-037100)	1
9			SEAL KIT, COUNTERBALANCE VALVE	
	04-028303		(for cylinder 04-032400)	2
			The following items are <b>not included</b> as part of the Lift Cylinder Assembly:	
10	06-044400		ELBOW, STRAIGHT THREAD (4-6 C50X-S)	4
11	08-051300		FITTING, GREASE (1/8" x 90°)	2

TITLE

LIFT CYLINDER, ELECTRIC EAGLE

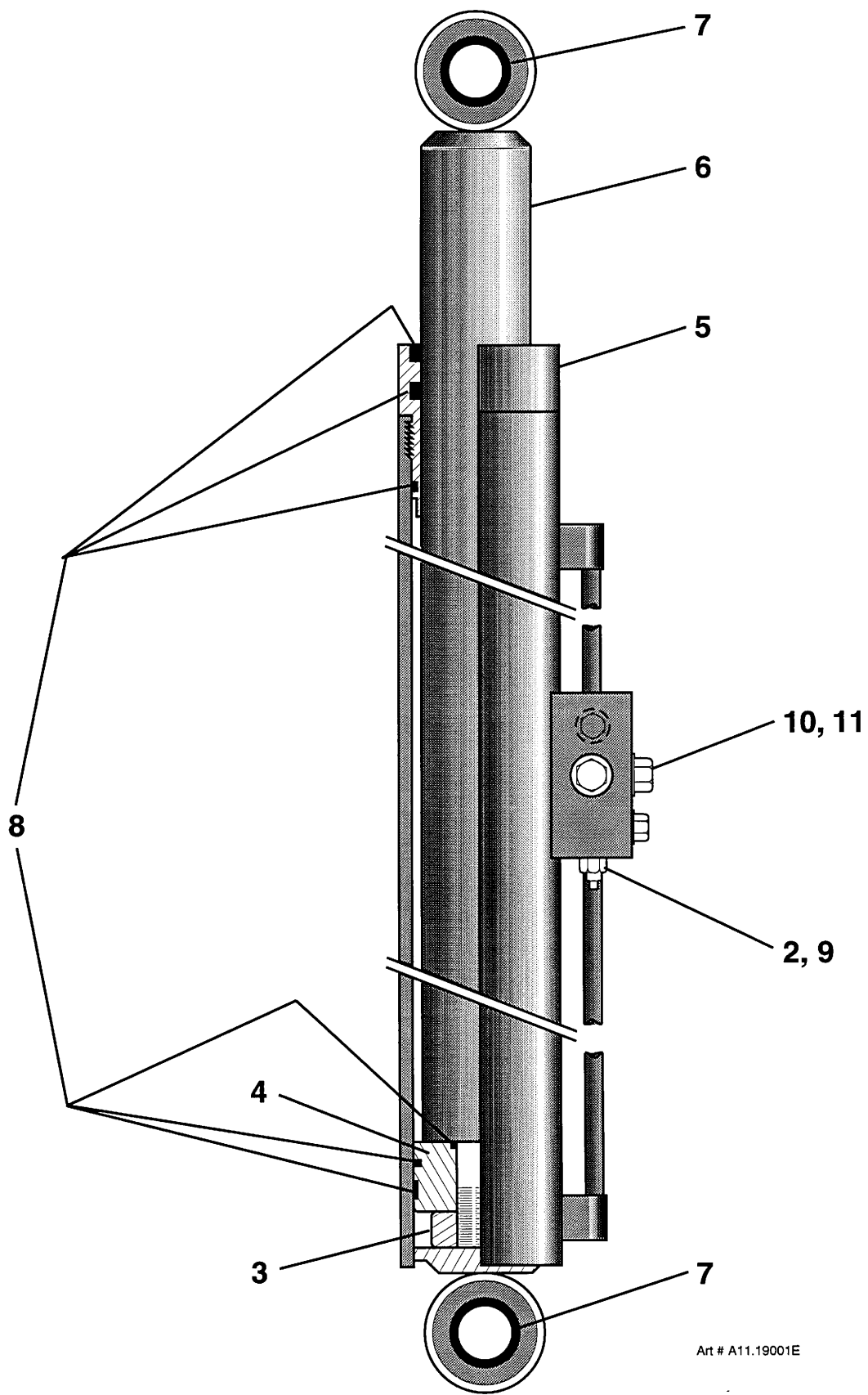
PLATE  
NO.

11.19

**SIMON AERIALS INC.**

REV. 06 MAY, 1995

PART  
NO.



Art # A11.19001E

TITLE

LIFT CYLINDER, ELECTRIC EAGLE

**SIMON AERIALS INC.**

REV. 06 MAY, 1995

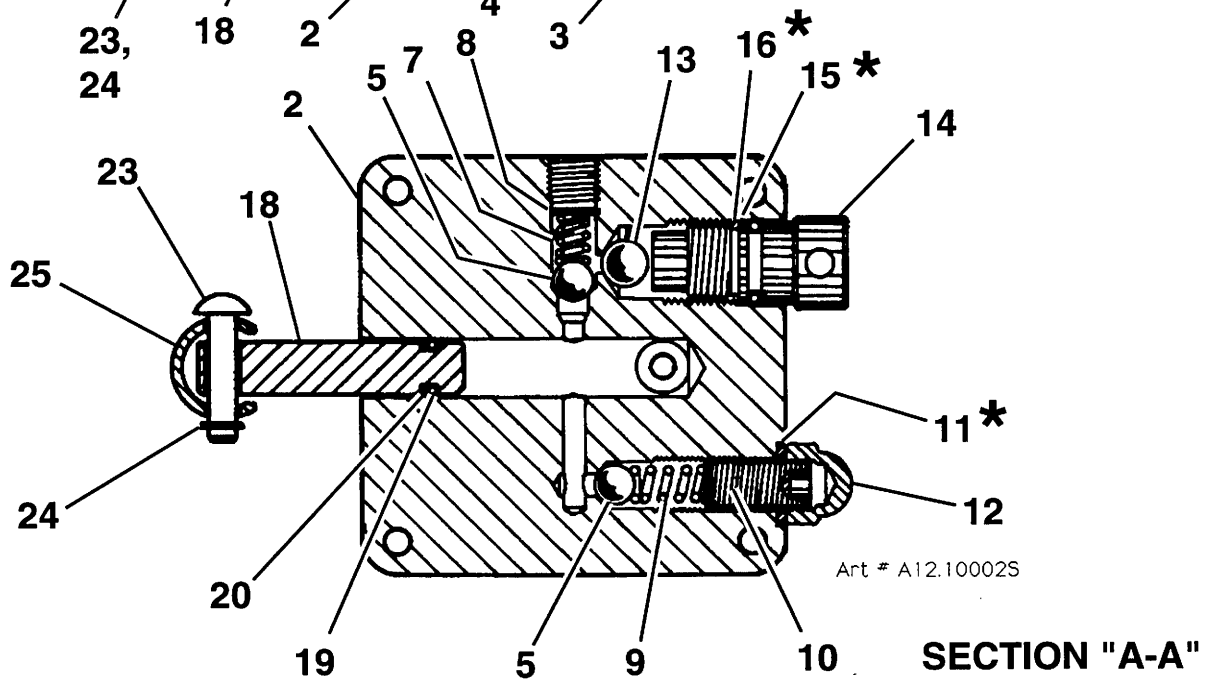
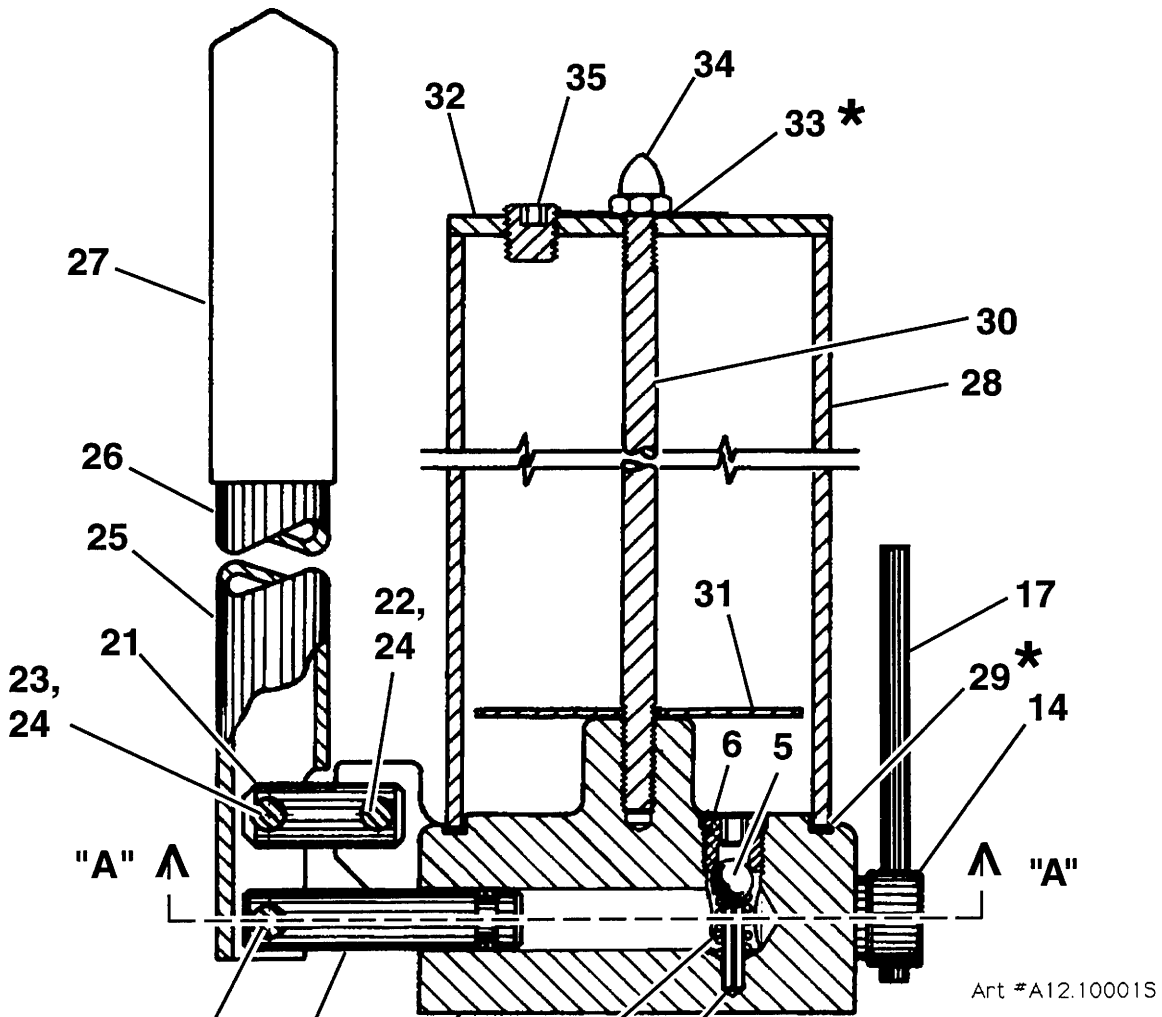
PART  
NO.

PLATE  
NO.

11.19

PARTS LIST				
ITEM	PART NO	SEE SECTION	DESCRIPTION	QTY.
	01-209500 219 0730		EMERGENCY HAND PUMP ASSEMBLY One piece handle is attached directly to pump Has stub handle attached to pump, and handle extension (Item 26) stored elsewhere on machine.	
1	01-209501		SEAL KIT, HAND PUMP	
2			[Items in kit marked with asterisk (*)]	1
3	01-209520		BASE, HAND PUMP	1
4	01-209519		ROLL PIN (3/16" x 11/16")	1
5	01-209504		SPRING, INLET	1
6	01-209503		BALL (3/8")	3
7	01-209509		SEAT, CHECK	1
8	01-209510		SPRING, CHECK	1
9	01-209505		RING, SNAP	1
10			SPRING, RELIEF	1
11		*	SCREW, ADJUSTING (1/2"-20)	1
12			WASHER	1
13	01-209506		NUT, ACORN (1/2"-20)	1
14	01-209507		BALL (1/2")	1
15		*	VALVE, RELEASE	1
16		*	"O"-RING, RELEASE VALVE	1
17	01-209508		RING, BACKUP	1
18	01-209518		ROLL PIN (5/16" x 4")	1
19			PISTON	1
20			"O"-RING, PISTON	1
21	01-209512		RING, BACKUP	1
22			LINK, HANDLE	1
23			RIVET	1
24			RIVET	2
25	01-209511		WASHER, LOCK	3
26	219 6360		HANDLE (must be modified for use on Pump 219 0730)	1
27	01-209513		EXTENSION, PUMP HANDLE (for Pump 219 0730)	1
28	01-209517	*	(Modified handle 01-209511. Includes handle grip)	1
29			GRIP, HANDLE	1
30	01-209515		TANK, HAND PUMP	1
31			GASKET, TANK	1
32			ROD, TIE	1
33	01-209502	*	BAFFLE	1
34	01-209516		LID, HAND PUMP TANK	1
35			WASHER	1
			NUT, ACORN (5/16"-18)	1
			PIPE PLUG (1/4" NPT)	1
TITLE EMERGENCY HAND PUMP ASSEMBLY				
PLATE NO.	12.10	SIMON AERIALS INC.		PART NO. 01-209500

REV. 04 AUG., 1995



TITLE

EMERGENCY HAND PUMP ASSEMBLY

**SIMON AERIALS INC.**

REV. 04 AUG., 1995

PART  
NO.

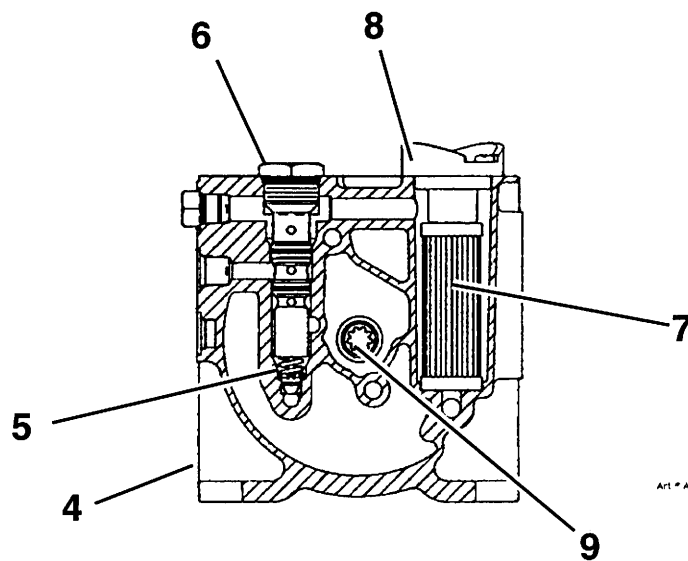
01-209500

PLATE  
NO.

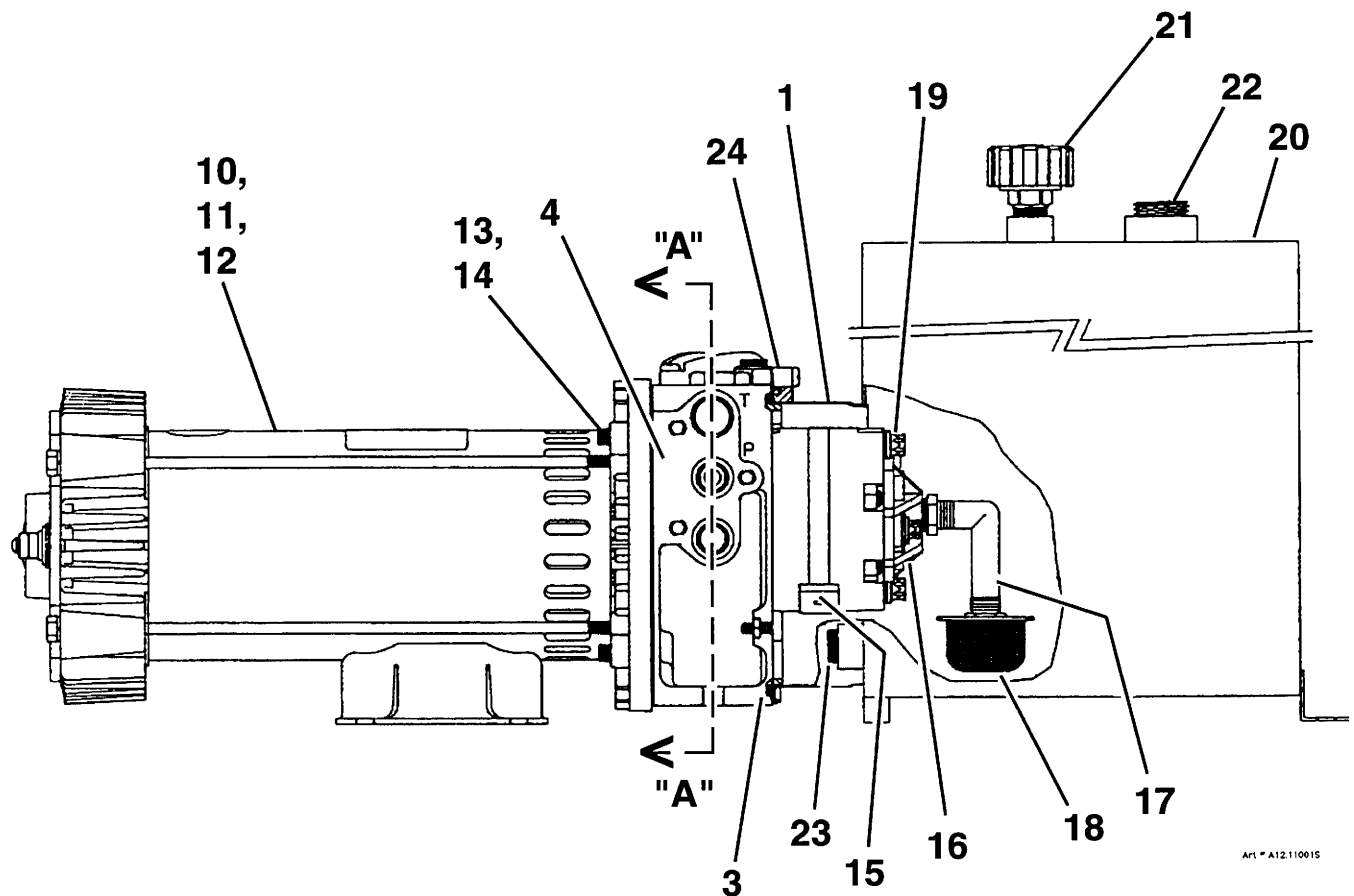
12.10



PARTS LIST				
ITEM	PART NO	SEE SECTION	DESCRIPTION	QTY.
	01-209200 01-234100		POWER UNIT (48 Volt DC) First type (Nameplate reads "DV-1005") Second type (Nameplate reads "DV-1008")	
1	01-209203		PUMP ASSEMBLY, HYDRAULIC (3.1 c.c. [.189 c.i.])	1
2	01-209201		SEAL KIT ("O"-rings and shaft seals for pump only)	1
3	01-209207		SEAL, PUMP TO END HEAD (5-1/2" [140 mm] Dia.)	1
4	01-209224		END, HEAD	1
5	01-209204		RELIEF ASSEMBLY (170 Bar [2,465 PSI])	1
6	01-209208		VALVE ASSEMBLY, CHECK	1
7	01-209209		ELEMENT, RETURN FILTER	1
8	01-209210		CAP, RETURN FILTER	
9	01-209205		COUPLING (Pump shaft to motor)	1
10	01-209202		MOTOR, PERMANENT MAGNET (48 Volt DC) For <b>first type</b> Power Unit	1
	01-234101		(Motor nameplate reads "2343-AC") For <b>second type</b> Power Unit (Motor nameplate reads "1909-BC")	
11	01-209211 01-234102		BRUSH, MOTOR For <b>first type</b> Power Unit For <b>second type</b> Power Unit	4
12	01-209212 01-234103		SPRING, BRUSH For <b>first type</b> Power Unit For <b>second type</b> Power Unit	4
13	01-209213		CAP SCREW, SOCKET HEAD	4
14	01-209214		WASHER, LOCK	4
15	01-209222		MAGNET	1
16	01-209221		COVER, SUCTION	1
17	01-209220		ELL, NYLON	1
18	01-209219		FILTER, SUCTION	1
19	01-209223		BOLT, TORX HEAD (3/8"-16 x 3-1/4", Grade 8)	2
20			TANK, HYDRAULIC (4 Gal. [15.1 L] capacity) (serviced only as part of power unit assembly)	1
21	01-209206		CAP, BREATHER (with dipstick)	1
22	01-209216		PLUG (3/4" NPT)	1
23	01-209217		PLUG (3/8" NPT)	1
24	01-209215		BRACKET ASSEMBLY, TANK MOUNTING	3
TITLE POWER UNIT, ELECTRIC EAGLE				
PLATE NO.	12.11	SIMON AERIALS INC.		PART NO.
REV. 13 MAY, 1995				



**SECTION "A-A"**



**TITLE**

**POWER UNIT, ELECTRIC EAGLE**

**SIMON AERIALS INC.**

REV. 13 MAY, 1995

**PART  
NO.**

**PLATE  
NO.**

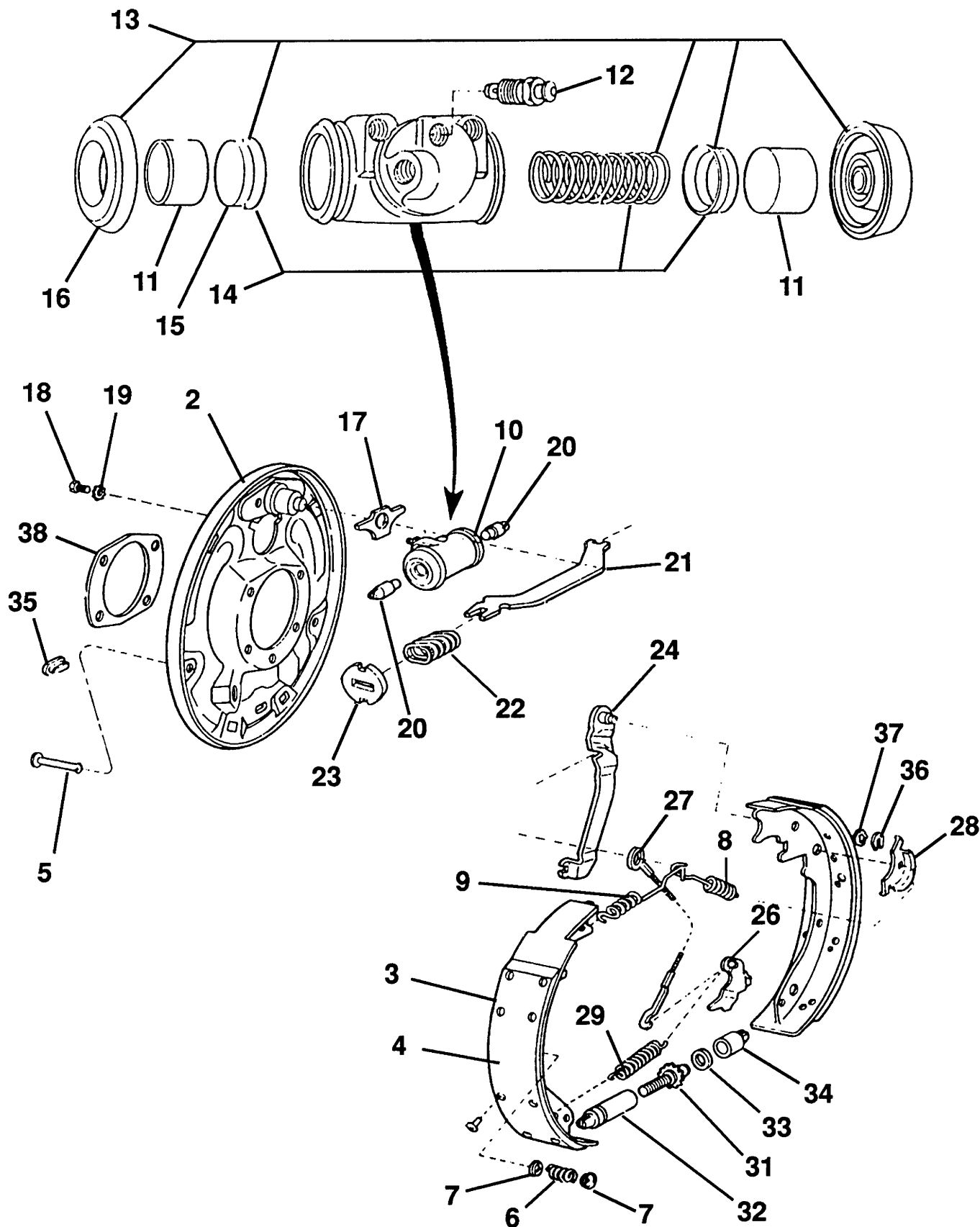
**12.11**

<b>PARTS LIST</b>				
<b>ITEM</b>	<b>PART NO</b>	<b>SEE SECTION</b>	<b>DESCRIPTION</b>	<b>QTY.</b>
1	02-022265		DRUM, REAR BRAKE (not shown)	2
2	02-022249		PLATE ASSEMBLY, BRAKE BACKING (Right hand)	1
	02-022250		PLATE ASSEMBLY, BRAKE BACKING (Left hand)	1
3	02-022247		SHOE AND LINING KIT, BRAKE (Primary and secondary shoes and linings for one side)	1
4	02-022234		LINING KIT (two brake linings only, for one side of axle)	1
5	02-022240		PIN, SHOE HOLD DOWN	2
6	02-022239		SPRING, SHOE HOLD DOWN (includes spring and 2 cups)	2
7	02-022244		CUP, SHOE HOLD DOWN	2
8	02-022262		SPRING, SHOE RETRACTING (Red)	1
9	02-022263		SPRING, SHOE RETRACTING (Black)	1
10	02-022251		CYLINDER ASSEMBLY, WHEEL (Right hand)	1
	02-022252		CYLINDER ASSEMBLY, WHEEL (Left hand)	1
11	02-022246		PISTON, WHEEL CYLINDER	2
12	02-022248		SCREW, WHEEL CYLINDER BLEED	1
13	02-022261		WHEEL CYLINDER REPAIR KIT	1
14	02-022260		EXPANDER AND SPRING ASSEMBLY	1
15			CUP, WHEEL CYLINDER  (Special, for use with hydraulic fluid only)	2
16			BOOT, WHEEL CYLINDER	2
17	02-022233		PLATE, WHEEL CYLINDER MOUNTING	1
18			BOLT, BRAKE CYLINDER RETAINING	2
19			WASHER, BRAKE CYLINDER RETAINING	2
20	02-022237		LINK, WHEEL CYLINDER	2
21	02-022256		STRUT, PARKING BRAKE (Right hand)	1
	02-022257		STRUT, PARKING BRAKE (Left hand)	1
22	02-022253		SPRING, STRUT	1
23	02-022258		RETAINER	1
24	02-022254		LEVER, PARKING BRAKE (Right hand)	1
	02-022255		LEVER, PARKING BRAKE (Left hand)	1
TITLE	REAR DRUM BRAKE ASSEMBLY			
PLATE NO.	18.06	SIMON AERIALS INC.	REV. 16 AUG., 1993	PART NO.

## REAR DRUM BRAKE ASSEMBLY

PART  
NO.





TITLE

REAR DRUM BRAKE ASSEMBLY

**SIMON AERIALS INC.**

REV. 16 AUG., 1993

PART  
NO.

PLATE  
NO.

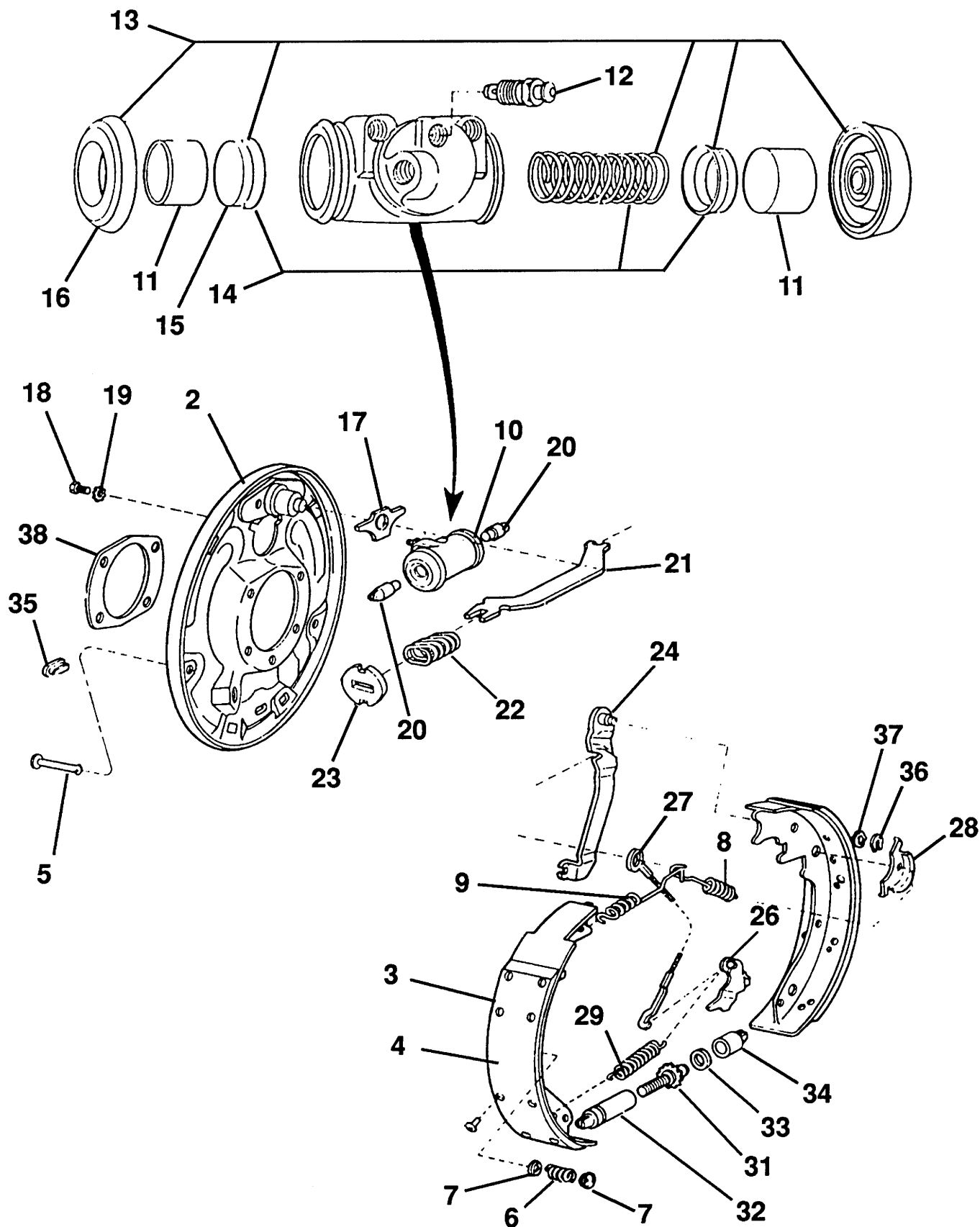
18.06

## PARTS LIST

[illegible]

**TITLE** REAR DRUM BRAKE ASSEMBLY

PLATE NO.	18.06	SIMON AERIALS INC.	REV. 16 AUG., 1993	PART NO.
-----------	-------	--------------------	--------------------	----------



TITLE

REAR DRUM BRAKE ASSEMBLY

**SIMON AERIALS INC.**

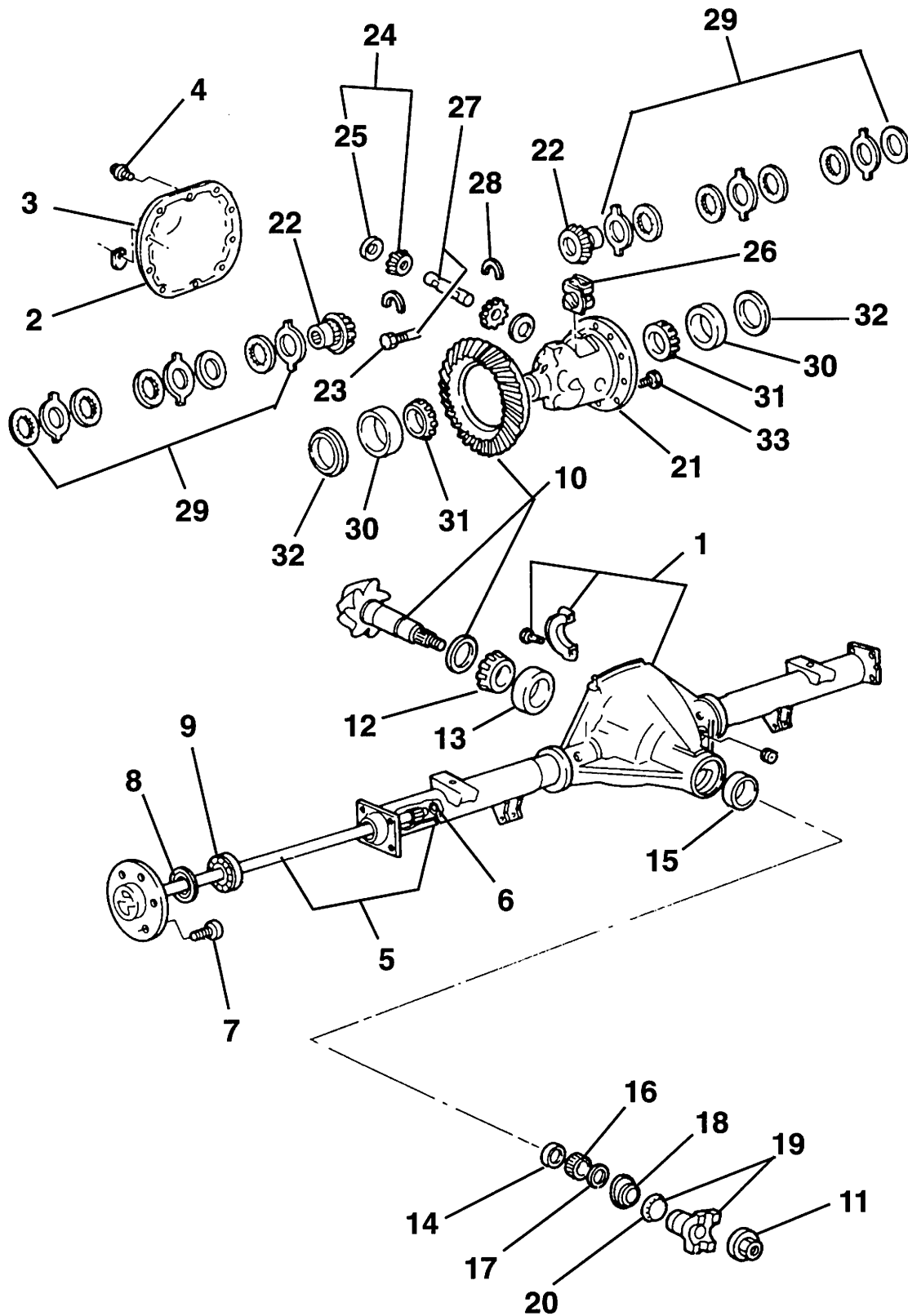
REV. 16 AUG., 1993

PART  
NO.

PLATE  
NO.

18.06

PARTS LIST				
ITEM	PART NO	SEE SECTION	DESCRIPTION	QTY.
1	02-022217		HOUSING ASSEMBLY, AXLE	1
2	02-022230		COVER, DIFFERENTIAL HOUSING	1
3	02-022229		SEALANT, RTV (Ford #D6AZ 19562-ba or equivalent)	A.R.
4	02-022231		BOLT, DIFFERENTIAL HOUSING COVER	10
5	02-022201		AXLE SHAFT ASSEMBLY (includes "O"-Ring) (Right)	1
	02-022202		AXLE SHAFT ASSEMBLY (includes "O"-Ring) (Left)	1
6	02-022203		"O"-RING, AXLE SHAFT	1
7	02-022211		BOLT, WHEEL LUG	A.R.
8	02-022212		SEAL, OUTER WHEEL BEARING OIL	2
9	02-022213		BEARING ASSEMBLY, WHEEL (Outer)	2
10	02-022216		GEAR SET, AXLE RING AND PINION (3.55:1)	1
11			NUT, LOCK	1
12	02-022215		CONE AND ROLLER, PINION BEARING (Rear)	1
13	02-022214		CUP, PINION BEARING (Rear)	1
14	02-022205		SPACER, PINION BEARING	1
15	02-022204		CUP, PINION BEARING (Front)	1
16	02-022206		CONE AND ROLLER, PINION BEARING (Front)	1
17	02-022207		SEAL, PINION SHAFT OIL	1
18	02-022208		SLINGER, PINION SHAFT OIL	1
19	02-022209		FLANGE ASSEMBLY, YOKE (includes deflector)	1
20	02-022210		DEFLECTOR, OIL SEAL	1
21	02-022221		CASE, DIFFERENTIAL	1
22	02-022224		GEAR, AXLE SHAFT	2
23	02-022225		PIN, DIFFERENTIAL PINION SHAFT LOCK	1
24	02-022226		PINION KIT, DIFFERENTIAL (includes [2] gears and [2] washers)	1
25	02-022228		WASHER, PINION	2
26	02-022222		CLUTCH, DIFFERENTIAL SPRING	1
27	02-022227		SHAFT, DIFFERENTIAL PINION (includes Pin, Item 23)	1
28	02-022232		"U"-WASHER	2
29	02-022223		DISC KIT, DIFFERENTIAL (one kit needed per axle side)	2
30	02-022218		CUP, DIFFERENTIAL BEARING	2
31	02-022219		CONE AND ROLLER, DIFFERENTIAL BEARING	2
32			SHIM, DIFFERENTIAL BEARING ADJUSTMENT	A.R.
33	02-022220		BOLT, RING GEAR	10
34	See plate...	18.06	BRAKE ASSEMBLY, REAR DRUM (not shown)	2
			The following items <b>are not</b> part of Axle Assembly 02-022200:	
35	10-099001		NUT, WHEEL LUG (not shown)	12
TITLE REAR AXLE ASSEMBLY				
PLATE NO.	19.01	SIMON AERIALS INC.		PART NO. 02-022200



TITLE

REAR AXLE ASSEMBLY

**SIMON AERIALS INC.**

REV. 16 AUG., 1994

PART  
NO.

02-022200

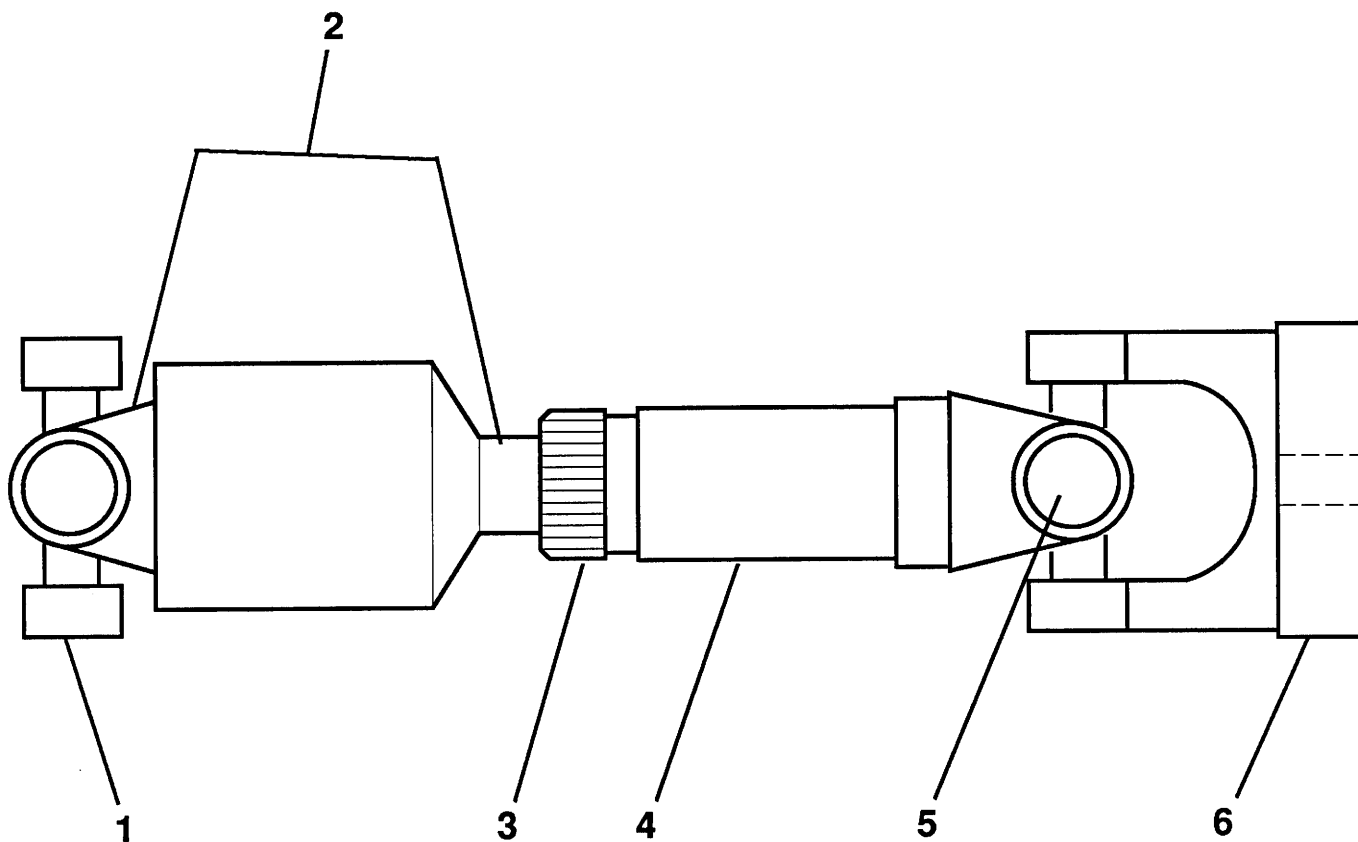
PLATE  
NO.

19.01

[illegible]

## REAR DRIVE SHAFT

**PART NO.** 02-024500



TITLE

REAR DRIVE SHAFT

**SIMON AERIALS INC.**

REV. 17 AUG., 1993

PART  
NO.

02-024500

PLATE  
NO.

20.03



## PARTS LIST

[illegible]

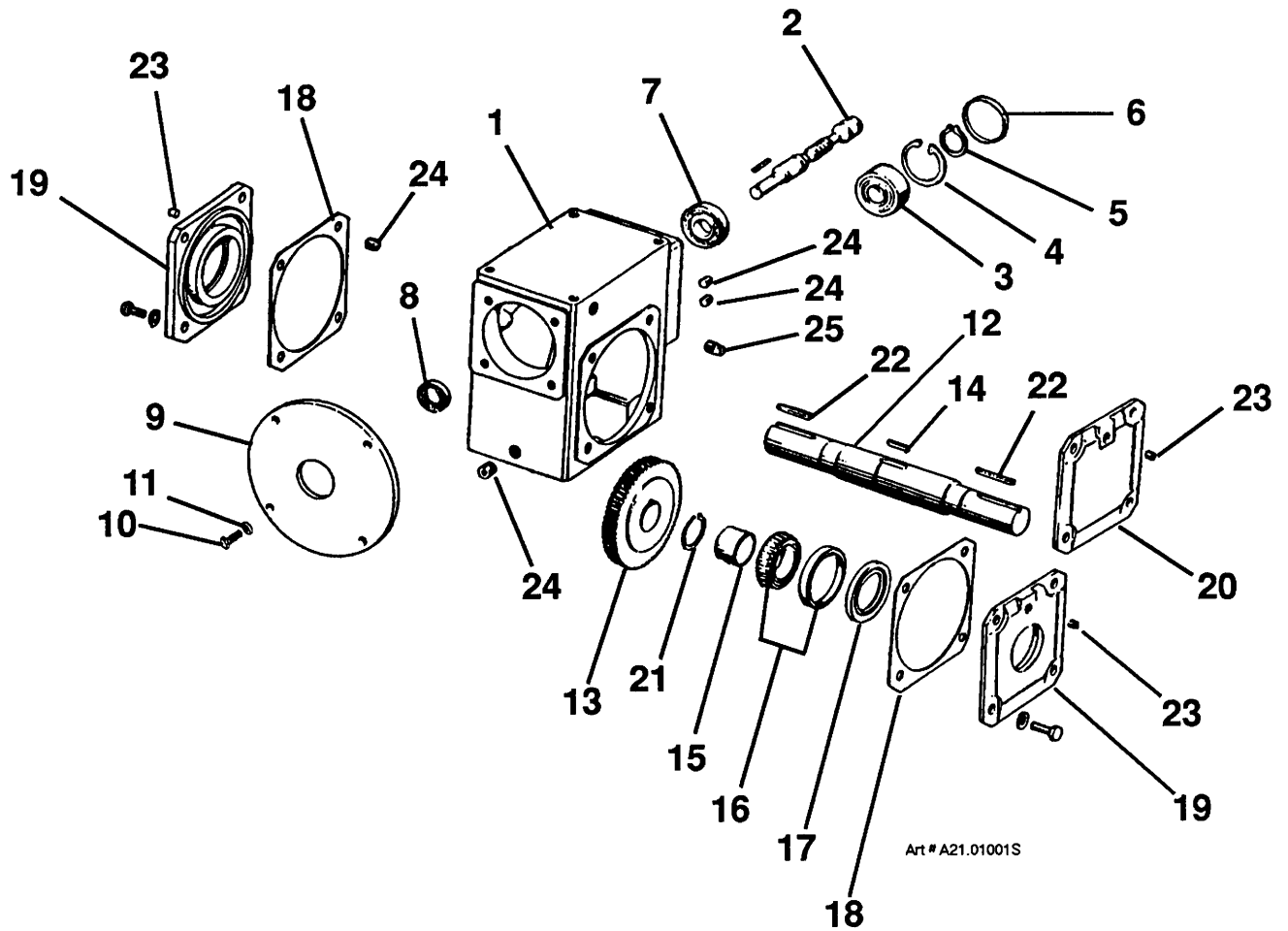
**TITLE** PLATFORM ROTATOR (40:1 WORM SPEED REDUCER)

PLATE NO.	21.01	SIMON AERIALS INC.
-----------	-------	--------------------

REV. 28 FEB., 1992

PART NO. 02-012400





TITLE PLATFORM ROTATOR (40:1 WORM SPEED REDUCER)

**SIMON AERIALS INC.**

REV. 28 FEB., 1992

PART NO. 02-012400

PLATE NO. 21.01

## PARTS LIST

[illegible]**TITLE**

## HYDRAULIC ROTATOR

PLATE NO.	
--------------	--

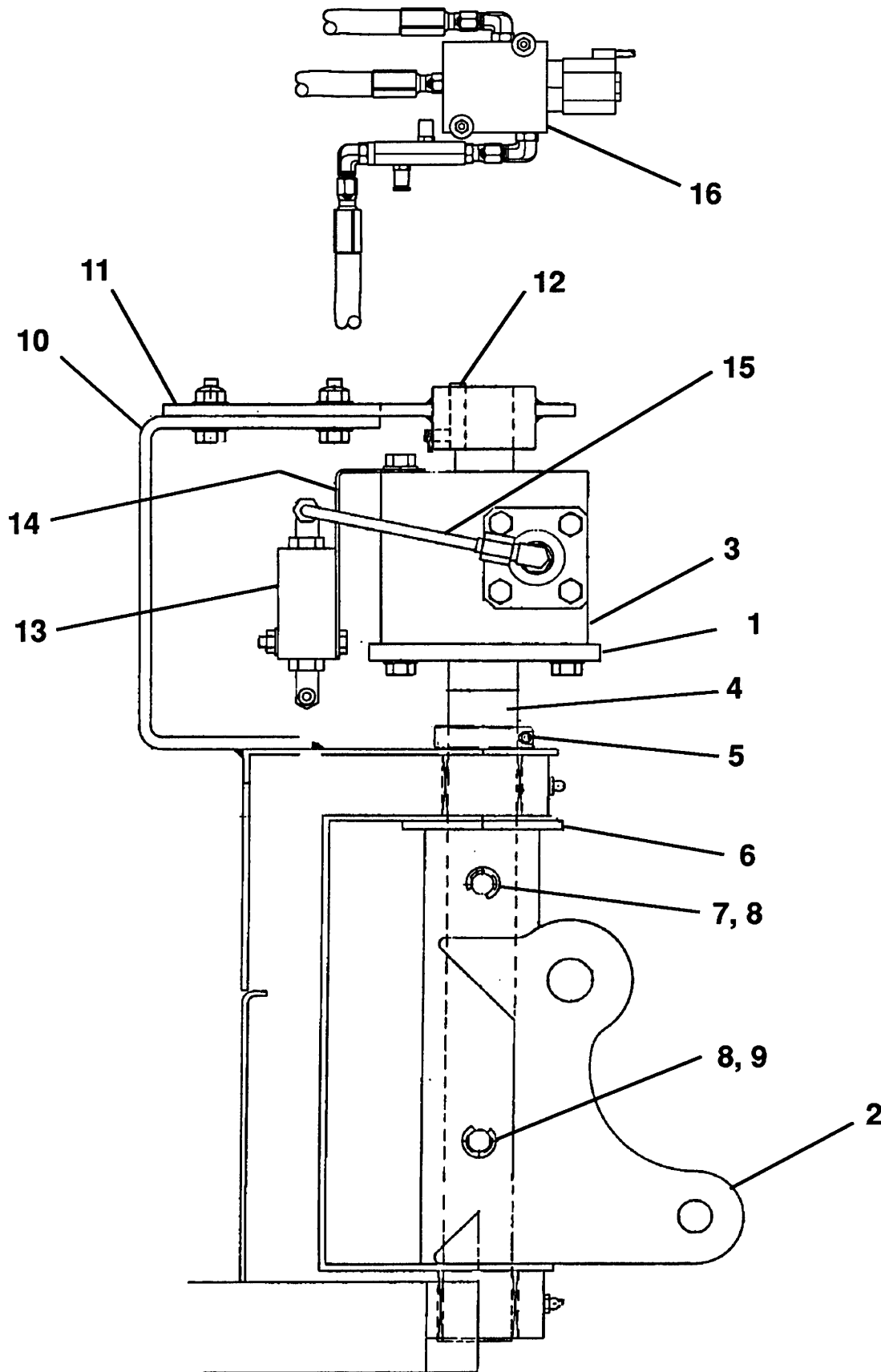
21.03

**SIMON AERIALS INC.**

REV. 17 AUG., 1993

**PART  
NO.**

2132120



TITLE

HYDRAULIC ROTATOR

**SIMON AERIALS INC.**

REV. 17 AUG., 1993

PART  
NO.

2132120

PLATE  
NO.

21.03

## PARTS LIST

[illegible]

**TITLE**

## HYDRAULIC ACTUATOR ASSEMBLY

**PLATE  
NO.**

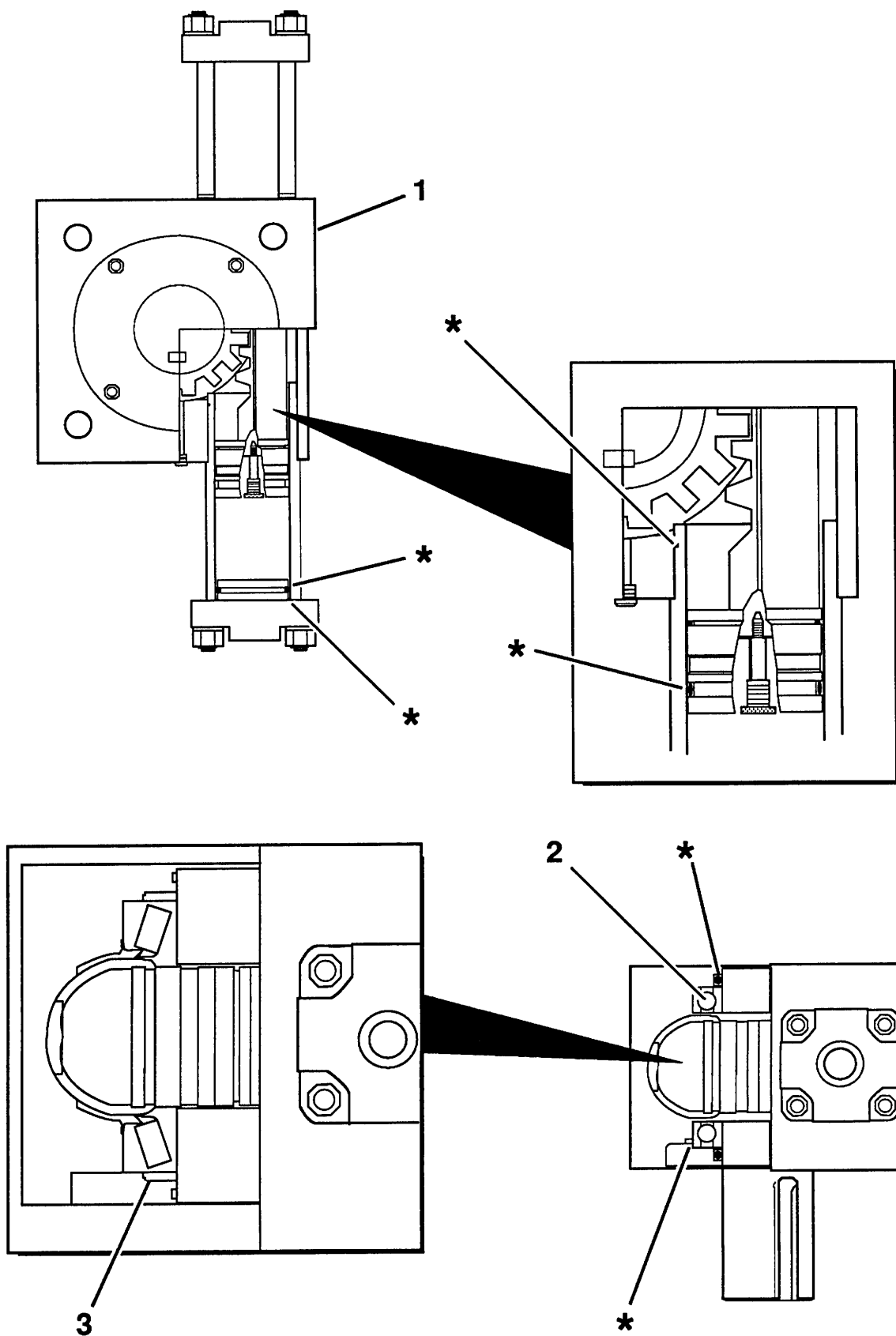
21.04

# SIMON AERIALS INC.

REV. 28 FEB., 1992

**PART  
NO.**

01-084500



TITLE

HYDRAULIC ACTUATOR ASSEMBLY

**SIMON AERIALS INC.**

REV. 28 FEB., 1992

PART  
NO.

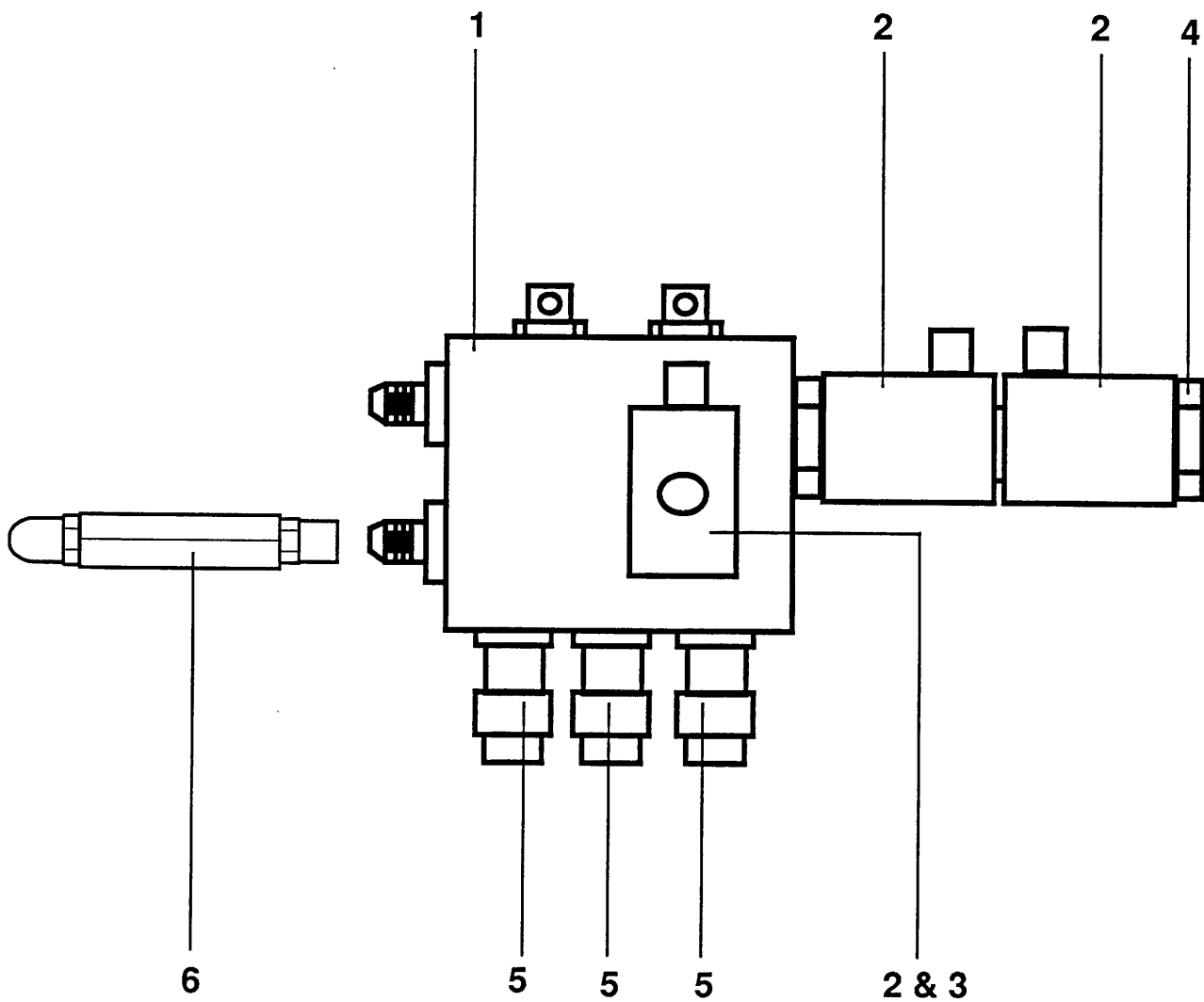
01-084500

PLATE  
NO.

21.04

## PARTS LIST

ITEM	PART NUMBER	SEC.	DESCRIPTION	QTY.
1	01-087300		BLOCK, VALVE	1
2	01-087400		VALVE, SOLENOID	3
3	01-088900		CARTRIDGE (SINGLE SOLENOID)	1
4	01-089000		CARTRIDGE (DOUBLE SOLENOID)	1
5			CARTRIDGE, RELIEF	3
6	01-020800		VALVE, CHECK	1
DESCRIPTION			VALVE BLOCK	PART NO.



DESCRIPTION

VALVE BLOCK

PART NO.

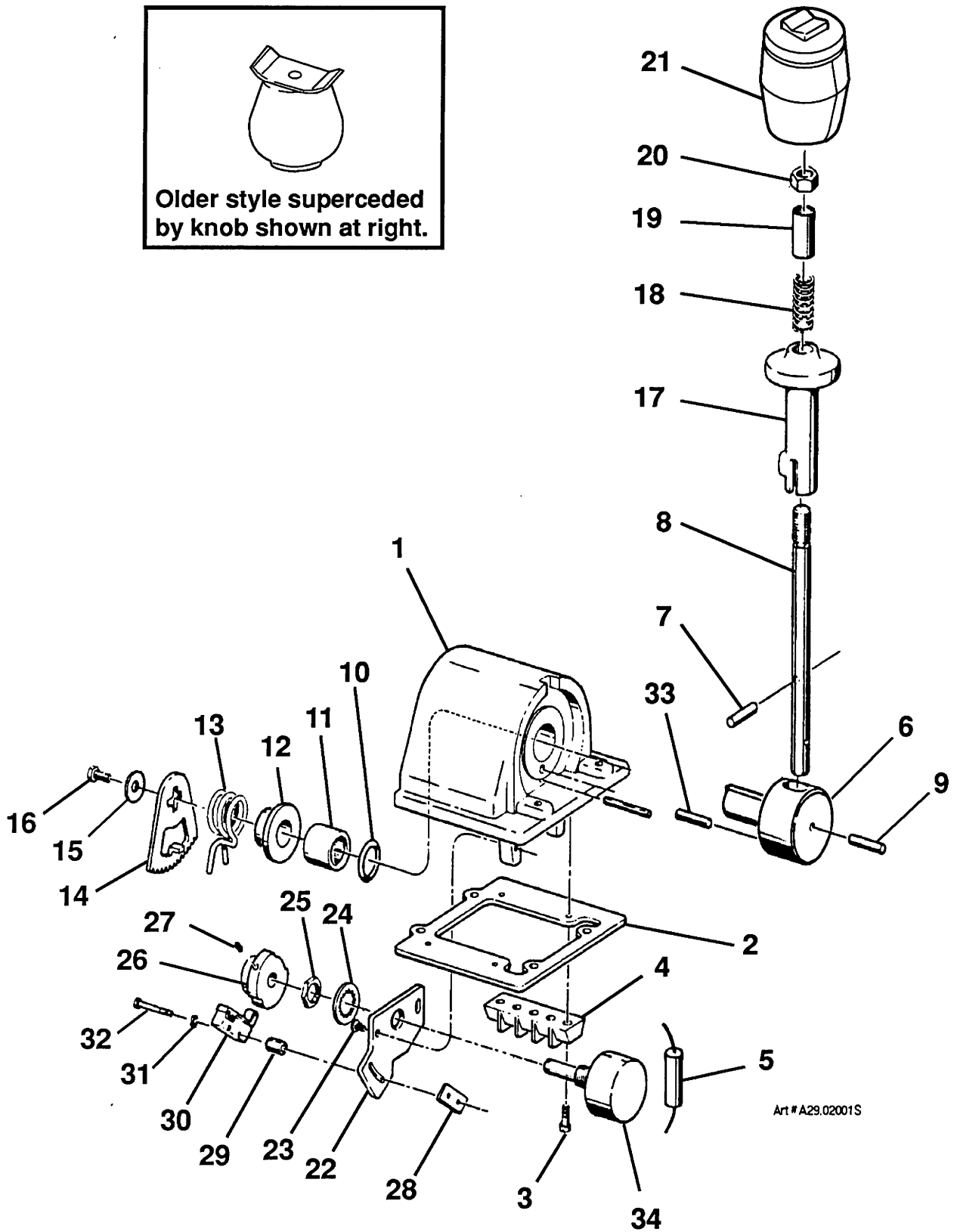
# PARTS LIST

ITEM	PART NO	SEE SECTION	DESCRIPTION	QTY.
	3515850		DRIVE CONTROLLER ASSEMBLY (for fuel operated versions. Includes item 34)	1
	3515860		(for electric operated versions. Includes item 34)	1
1	03-426400		DRIVE CONTROLLER (does not include item 34) HOUSING, DRIVE CONTROLLER	1
2	03-027229		GASKET, PANEL	1
3			MACHINE SCREW, FILLISTER HEAD (#6-32 x 1/2")	4
4	03-426406		BLOCK, TERMINAL	2
5	03-061900		DIODE	1
6	03-426405		HANDLE, CONTROL	1
7	03-027218		PIN	1
8			EXTENSION, CONTROL HANDLE	1
9			PIN, GROOVED	1
10			"O"- RING	1
11			BEARING, LOW FRICTION	1
12	03-027233		GUIDE, SPRING	1
13	03-027232		SPRING, TORSION	1
14	03-027234		SECTOR, GEAR	1
15			WASHER, FLAT (SAE)	1
16			MACHINE SCREW, HEX HEAD	1
17	03-027221		SLIDE LOCK, CONTROL HANDLE	1
18	03-027215		SPRING, SLIDE LOCK	1
19	03-027219		SLEEVE, HANDLE	1
20			NUT, HEX	1
21	03-426407		GRIP ASSEMBLY, ROCKER SWITCH	1
22			PLATE, POTENTIOMETER MOUNTING	1
23			MACHINE SCREW, PAN HEAD	2
24			WASHER, LOCK	1
25			NUT, HEX	1
26	03-426404		SPUR GEAR AND CAM	1
27			SET SCREW, HEX SOCKET	1
28			PLATE, FASTENER	1
29			SPACER	2
30	03-037400		SWITCH, ROLLER LEVER (supercedes part #s 03-027217 and 03-426402)	2
31			WASHER, LOCK	2
32			MACHINE SCREW, FILLISTER HEAD	2
33			PIN, GROOVED	1
34	03-432000		POTENTIOMETER (250 Ohm) (for fuel units)	1
	03-451700		POTENTIOMETER (25 K Ohm) (for electric units)	1

TITLE DRIVE CONTROLLER ASSEMBLY (JOY STICK)

PLATE NO. 29.02	<b>SIMON AERIALS INC.</b>	REV. 23 AUG., 1993	PART NO. 03-426400
-----------------	---------------------------	--------------------	--------------------





TITLE

DRIVE CONTROLLER ASSEMBLY (JOY STICK)

**SIMON AERIALS INC.**

REV. 23 AUG., 1993

PART  
NO.

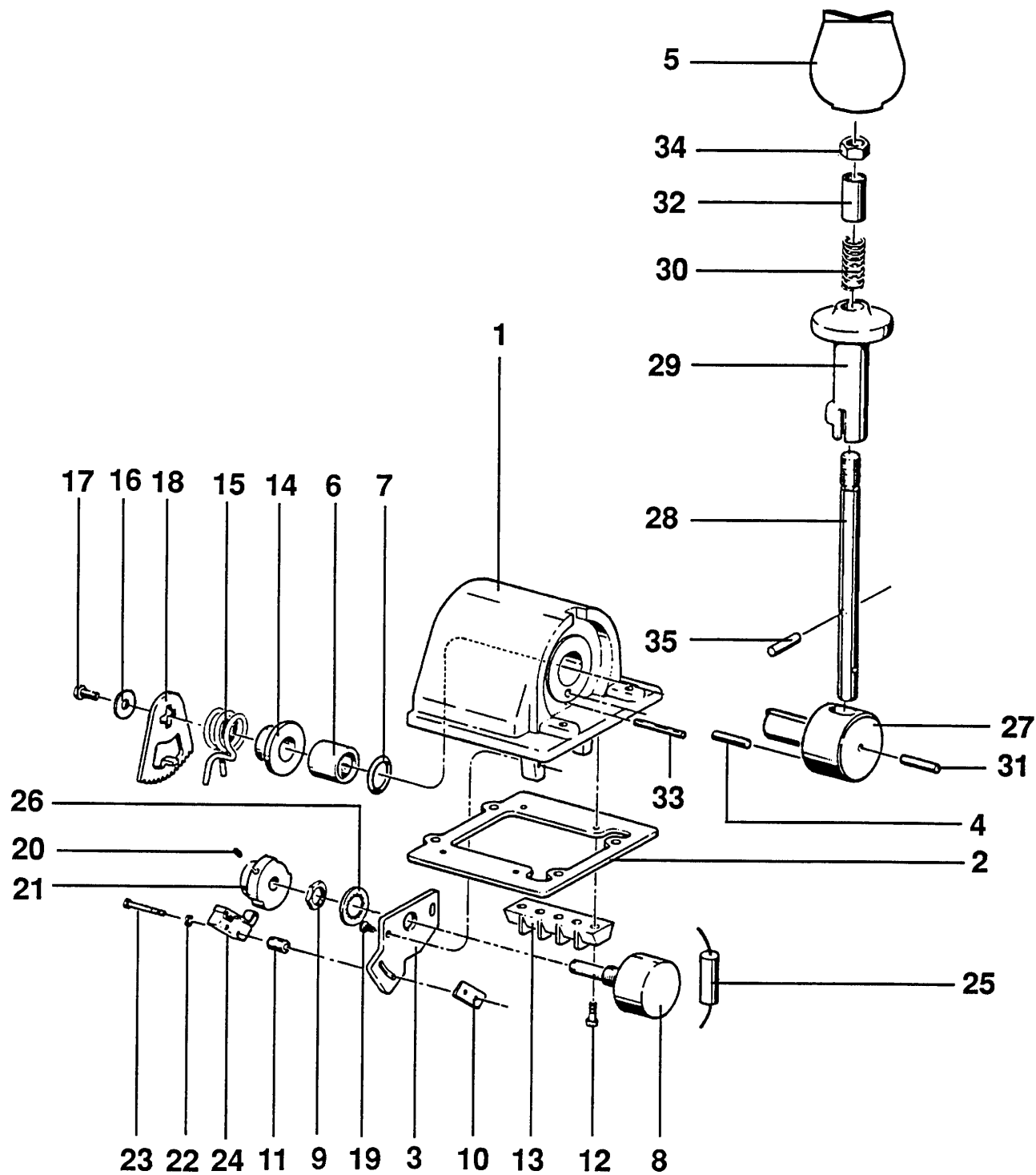
03-426400

PLATE  
NO.

29.02

# PARTS LIST

ITEM	PART NUMBER	SEC.	DESCRIPTION	QTY.
1	03-451700		HOUSING	1
2			GASKET, PANEL	1
3			PLATE, MOUNTING	1
4			PIN, GROOVED	1
5			KNOB, BALL	1
6			BEARING, LOW FRICTION	1
7			O-RING	1
8			POTENTIOMETER	1
9			NUT, HEX	1
10			PLATE, FASTENER	1
11			SPACER	2
12			SCREW, MACHINE, HEAD, PHILLIPS	4
13			BLOCK, TERMINAL	2
14			GUIDE, SPRING	1
15			SPRING, TORSION	1
16	03-061900		WASHER, FLAT,SAE	1
17			SCREW, MACHINE, HEAD, HEX	1
18			GEAR, SECTOR	
19			SCREW, MACHINE, HEAD, PAN	2
20			SCREW, SET, SOCKET, HEX	1
21			GEAR, SPUR & CAM	1
22			WASHER, LOCK	2
23			SCREW, MACHINE, HEAD, PHILLIPS	2
24			SWITCH, LEVER, ROLLER	2
25			DIODE	1
26			WASHER, LOCK	1
27			HANDLE, CONTROL	1
28			EXTENSION, HANDLE, CONTROL	1
29			LOCK, SLIDE, HANDLE, CONTROL	1
30			SPRING, COMPRESSION, HELICAL	1
31			PIN, GROOVED	1
32			SLEEVE	1
DESCRIPTION			PART NO.	
JOYSTICK-DRIVE CONTROLLER (SHEET 1 OF 2)			3515860	



# DESCRIPTION

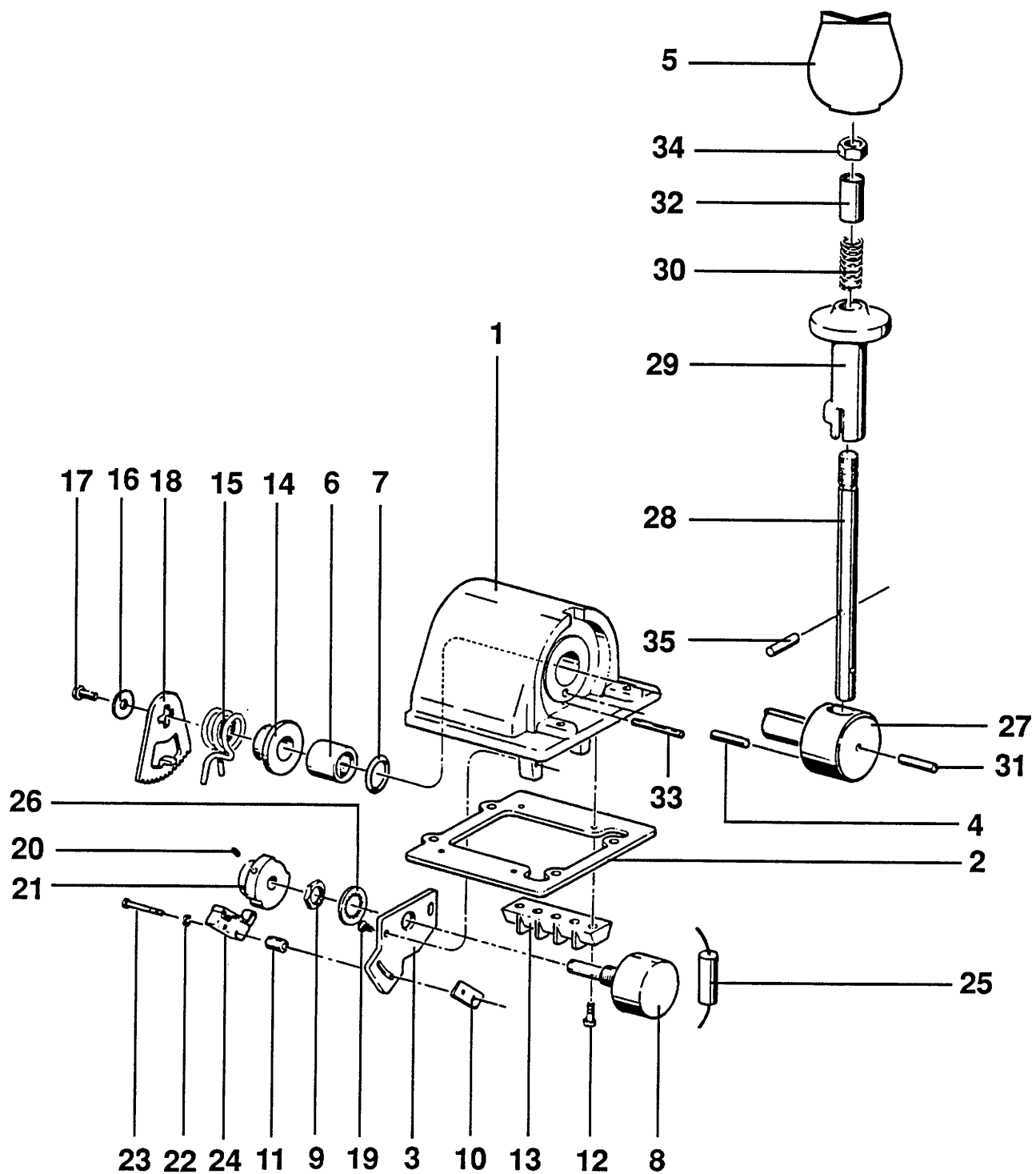
JOYSTICK-DRIVE CONTROLLER (SHEET 1 OF 2)

# PART NO.

3515860

# PARTS LIST

ITEM	PART NUMBER	SEC.	DESCRIPTION	QTY.
33			PIN	1
34			NUT, HEX	1
35			PIN	1
DESCRIPTION			PART NO.	
JOYSTICK-DRIVE CONTROLLER (SHEET 2 OF 2)			3515860	



# DESCRIPTION

JOYSTICK-DRIVE CONTROLLER (SHEET 2 OF 2)

# PART NO.

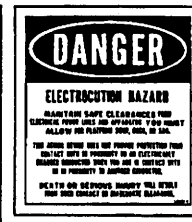
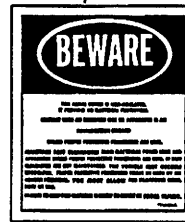
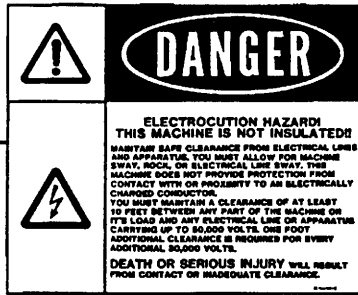
3515860

## PARTS LIST

ITEM	PART NUMBER	SEC.	DESCRIPTION	QTY.
1	DKS41/24		KIT, SILVER EAGLE DECAL	1
2	10-007200		DECAL, DISENGAGE LOCK PIN	1
3	10-007600		DECAL, 120 VDC 20 AMP	1
4	10-013400		DECAL, 500 LBS PAYLOAD CAPACITY	1
5	10-017100		DECAL, LARGE SIMON	1
6	10-018900		DECAL, BEWARE POTENTIAL HAZARD	1
7	10-019000		DECAL, DANGER ELECTROCUTION HAZARD	1
8	10-024500		DECAL, 20 AMP CIRCUIT BREAKER	1
9	10-025000		DECAL, PROPANE CLEAN OUT	1
10	10-083200		DECAL, 41/24	2
11	10-084900		DECAL, DANGER ELECTROCUTION HAZARD	2
12	10-087800		DECAL, GAS OUT PROPANE IN	1
13	10-093800		DECAL, SILVER EAGLE	2
14	10-093900		DECAL, LOGO EAGLE	2
15	10-095800		DECAL, OPERATOR INSTRUCTIONS	1
DESCRIPTION			PART NO.	
DECALS				

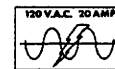
6

11



7

2



3

DISENGAGE LOCKPIN BEFORE  
USING THE TURNTABLE

20 AMP. CIRCUIT  
BREAKER

8

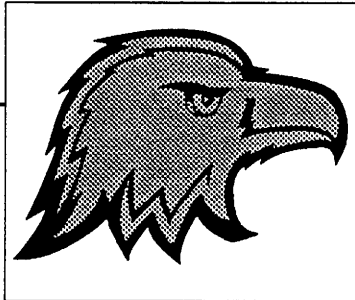
**500LBS.** (228.4 KG) DO NOT OVERLOAD  
MAXIMUM PAYLOAD CAPACITY

4

IN SWITCHING FROM GAS TO L.P.G.  
FIRST CLEAN OUT THE FUEL BY  
RUNNING THE ENGINE WITH THE  
TOGGLE SWITCH IN THE OFF POSITION

12

14



5

**SIMON**

13

**SILVER - EAGLE**

**41/24**

10

#### OPERATING INSTRUCTIONS

SIMON-AERIALS INC.

15

- PRESS AND HOLD FOOT SWITCH DOWN.
- TO OPERATE ANY FUNCTION, SLOWLY MOVE THE CONTROL LEVER IN THE DESIRED DIRECTION.
- TO STOP ANY FUNCTION, SLOWLY RETURN THE CONTROL LEVER TO ITS CENTERED POSITION.
- THEN RELEASE FOOT SWITCH.
- DRIVE - IF THE ENGINE LUGS DOWN, BACK OFF ON THE DRIVE CONTROLLER (REDUCE SPEED).
- STARTER INTERLOCK - THE OPERATOR IS ALLOWED 6.4 SECONDS CRANKING TIME. IF THE ENGINE IS NOT STARTED IN THIS PERIOD THE IGNITION MUST BE TURNED OFF TO OBTAIN ANOTHER CRANKING INTERVAL.

15-000000

DESCRIPTION

DECALS

PART NO.